

Materials



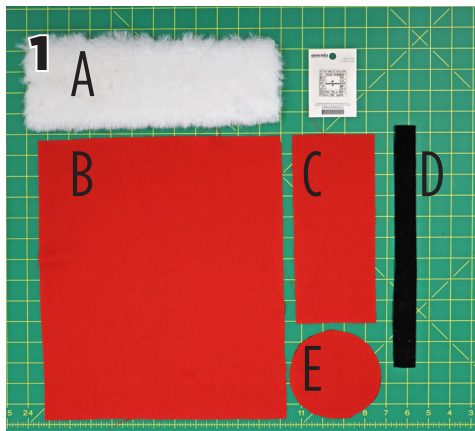
- Body Fabric: 0.5m red fabric
- Faux Fur Trim: 0.2m or scrap
- Black Fabric: 0.2m or scrap
- Ribbon: 0.2m or scrap
- Fashion Buckle

Sewing Info

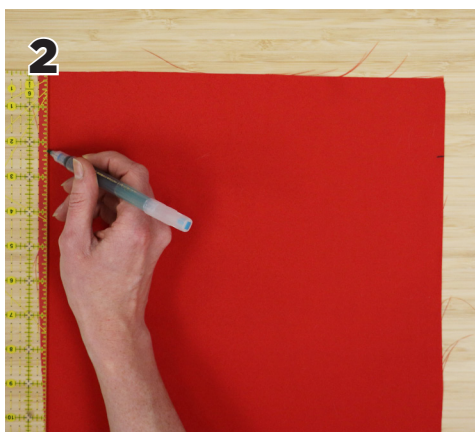
- Seam allowances are 1/4" unless otherwise indicated.



Instructions



- Cut 1 rectangle in white faux fur: 11.5" x 6" (or width of faux fur trim)
- Cut 1 rectangle from red fabric: 11.5" x 13.5"
- Cut 1 strip in red: 9 x 3.75"
- Cut 1 strip in black: 11.5" x 1"
- Cut 1 - 4.5" circle in red or use attached pattern piece



Measure 2.25" down from the top of your rectangle and clip 0.25" in on either side.



Fold your 2.25" flap inward, press and stitch.



Fold fur in half length ways. Wrong sides together, stitch to top flap making sure there is a 0.25" over lap on either side.



Fold your 2.25" flap downwards and stitch across creating a tube and securing fur to the body.



6
Stitch or glue black band across the body making sure the buckle is threaded through the strap.



7
Fold right sides together and stitch, making sure not to stitch over your flap.



8
Pin and stitch circle to the bottom of your tube.



9
Thread ribbon through tube.

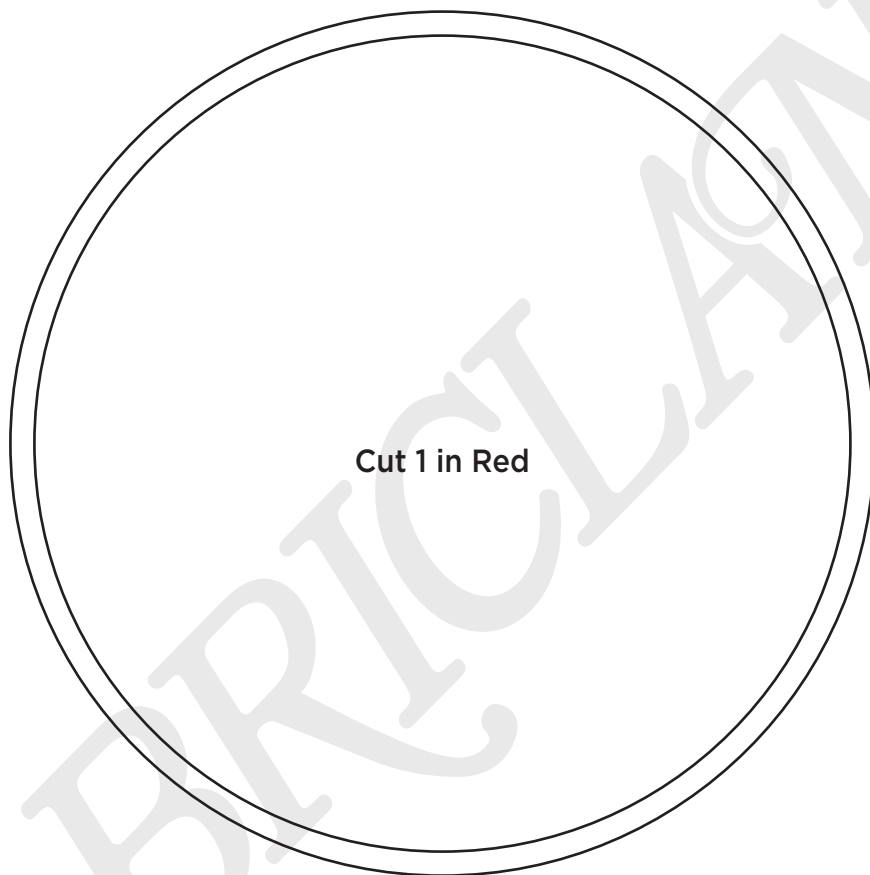


Handle

1. Fold strap in half length way, press.
2. Open fabric and fold edges toward the center, press.
3. Fold together and press.
4. Edge stitch along the open edge of the strap.
5. Position strap on the inside edge of your tube seam. Stitch in place.



Santa Wine Bottle Holder



©Fabricland 2019.

This pattern is not available for commercial resale. You cannot copy and sell or digitally distribute this pattern. You may sell items you make with this pattern.