

Materials



- 0.7m of 3" wide scallop-edged lace
- 0.3m of netting
- 1 felt square
- Beads
- Hair Comb
- Needle & Thread

Sewing Info

- Gather: A gather is created by running a thread along the length of the fabric, and then shortening the fabric along the threads by scrunching them together to make a ruffled effect.
- Pleat: A fold formed by doubling over the fabric and stitching it to itself and secured in place. Used in garments to fit narrower parts, or in drapes for texture.

Instructions



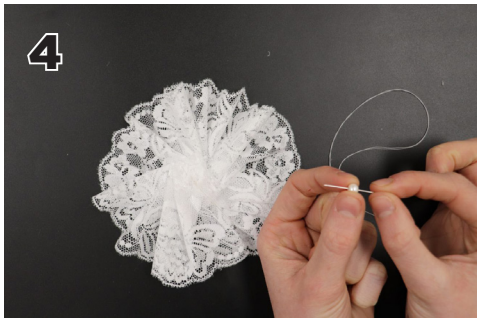
1. If your lace is a width larger than 3" trim it to be 3" wide.



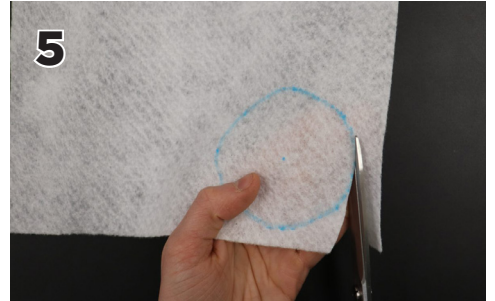
2. Gather and pleat your lace trim into a circle and secure with a pin



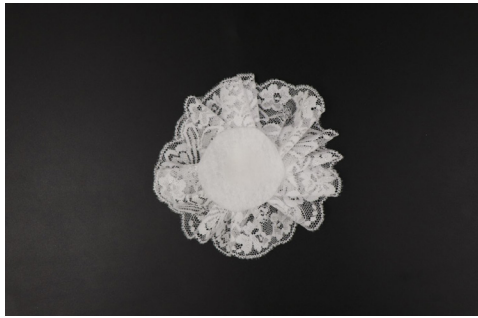
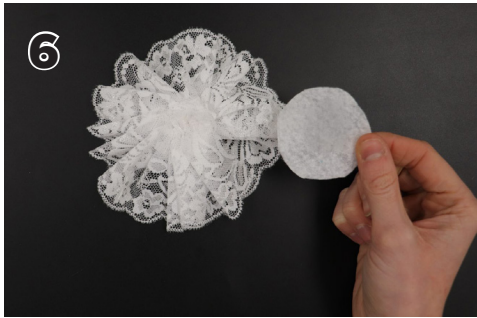
3. Hand sew the lace together and secure it with a knot.



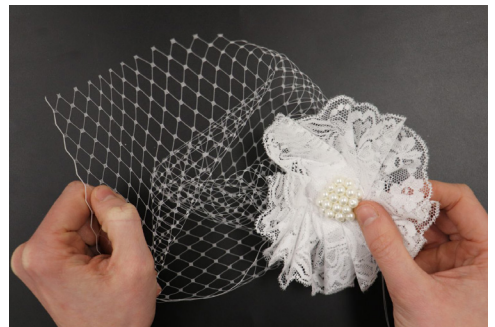
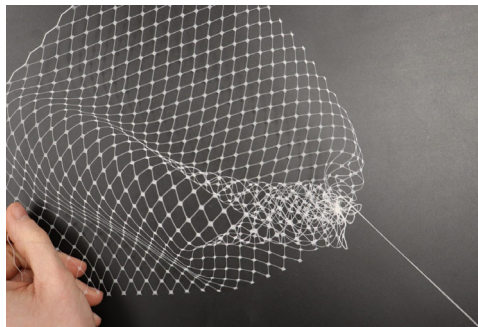
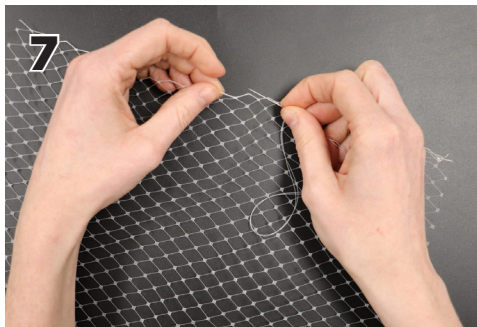
4. Thread some beads onto your thread and secure it into the centre of your lace. Tacking and adding beads as desired



5. Draw a circle onto your felt with a 1.5" diameter and cut it out.

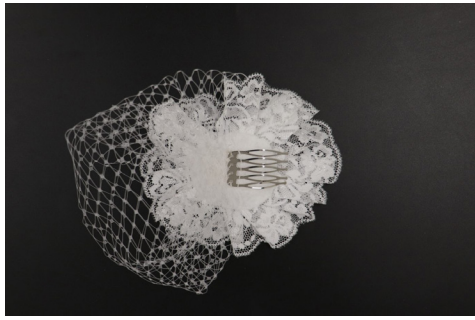
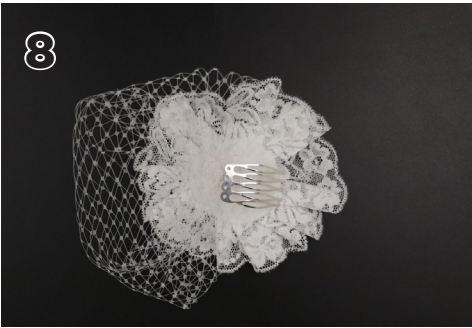


6. Place the felt circle onto the back of your lace and hand sew into place.



7. Gather the edge of your netting and secure it into place onto the back of your lace. Fold over the other edge to create a pouf and sew to the back of the lace.

8



8. Place the hair comb onto the back of your fascinator and hand stitch into place.

