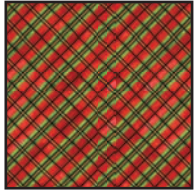


Coffee Cup Sleeve & Hand Warmers

Materials: Snowbird Flannel



Fabric A
Words and Tossed Snowmen - Black



Fabric B
Red Plaid Bias



Fabric C
Mitten Allover - White



Fabric D
Snowflake - Red



Fabric E
Tossed Snowmen - Black

Fabric Requirements

For 2x Coffee Sleeves
3x Hand Warmers

Fabric A Words and Tossed Snowmen 0.2m - Black

Fabric B Red Plaid Bias 0.2m

Fabric C Mitten Allover - White 0.2m

Fabric D Snowflake - Red 0.2m

Fabric E Tossed Snowman - Black 0.2m

Extras

Batting Wrap n Zap Batting 0.2m

Buttons Dress it up buttons 1 Packet

Elastic 1/8" Black Elastic 0.2m

Filler Rice 1/2 Cup

Cutting Instructions

Please note: All strips are cut across the width of fabric (WOF) from selvedge to selvedge unless otherwise noted.

From Fabric A, B and Batting cut:

(2) Coffee Cup Sleeve Pattern Piece

From Fabric C cut:

(2) Mitten Hand Warmer Pattern Piece

From Fabric D cut:

(2) Heart Hand Warmer

From Fabric E cut:

(2) Snowman Hand Warmer

©Fabricland 2020.

This pattern is not available for commercial resale. You cannot copy and sell or digitally distribute this pattern. You may sell items you make with this pattern.

Please read instructions carefully before cutting

Coffee Sleeve Assembly

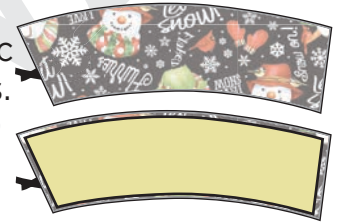
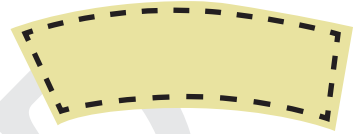
Take (2) Batting and trim 1/4" all around.

Trim Elastic to 2" and fold in half to create a loop.

Place (2) A right sides together, insert the elastic loop between both layers. Place (1) Batting on top. Stitch 1/4" around, leaving a 2" gap.

Turn right side out and topstitch around, closing gap. Quilt as desired. Stitch (1) Button to the opposite side of the Elastic loop.

Repeat with Fabric B



Hand Warmer Assembly

Place (2) C wrong sides together. Stitch 1/4" around, leaving a 2" gap.

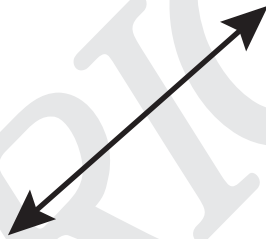
Using a funnel or paper, fill with Rice. Stitch 2" gap closed.

Repeat with Fabric D and E



Coffee Cup Sleeve & Hand Warmers

Coffee Cup Sleeve
Cut:
2 x Fabric
1 x Wrap n Zap



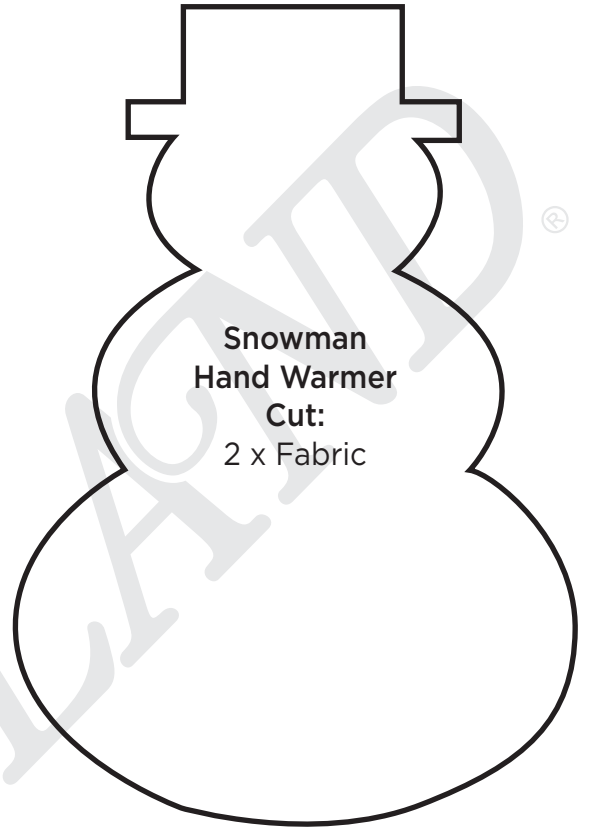
©Fabricland 2020.

This pattern is not available for commercial resale. You cannot copy and sell or digitally distribute this pattern. You may sell items you make with this pattern.

Coffee Cup Sleeve & Hand Warmers



Heart Hand Warmer
Cut:
2 x Fabric



**Snowman
Hand Warmer**
Cut:
2 x Fabric



**Mitten
Hand Warmer**
Cut:
2 x Fabric

©Fabricland 2020.

This pattern is not available for commercial resale. You cannot copy and sell or digitally distribute this pattern. You may sell items you make with this pattern.