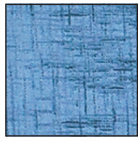
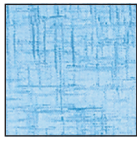


# Mountain Peaks

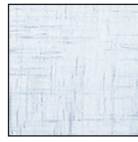
## Materials: Texture Blender



Fabric A  
Navy



Fabric B  
Denim



Fabric C  
Silver

## Fabric Requirements - Size 12

Fabric A	Navy	1m
Fabric B	Denim	2.9m
Fabric C	Silver	2.1m

## Lining

Fabric D	Lining	2m
----------	--------	----

## Pattern

Vogue	V1563	1
-------	-------	---

## Cutting Instructions

Please note: All strips are cut across the width of fabric (WOF) from selvedge to selvedge unless otherwise noted.

### From Fabric A cut:

- (5) 8" x WOF strips squares. Sub cut:
- (23) 8" x 8" squares

### From Fabric B cut:

- (14) 8" x WOF strips squares. Sub cut:
- (69) 8" x 8" squares

### From Fabric C cut:

- (10) 8" x WOF strips squares. Sub cut:
- (46) 8" x 8" squares

## Blocks Assembly - Seam Allowance: 1/4"

Place (1) A, right sides together with (1) B.



Draw a diagonal line corner to corner and stitch 1/4" on either side.



Cut down middle and press open. Trim to 7" squares.



Place (1) B, right sides together with (1) C.



Draw a diagonal line corner to corner and stitch 1/4" on either side.

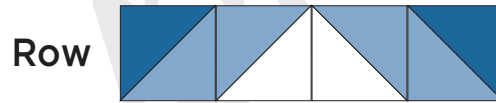
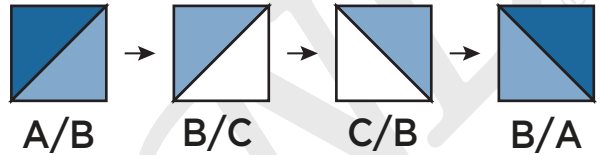


## Please read instructions carefully before cutting

Cut down middle and press open. Trim to 7" squares.



Sew A/B > B/C > C/B > B/A together to create 1 row.



## Pattern Prep

The first step to making a quilted jacket is to lay out all pattern pieces and decide what will be kept the same, what will be joined together before cutting and what will be excluded.

We are using Vogue 1563. These are the changes we made:

- Joined all back pieces
- Joined all sleeve pattern pieces
- Excluded sleeve band
- Excluded upper pocket, welt and facing

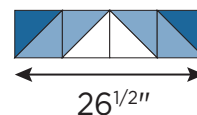
\*Reference image 1

## Quilting Sizing

Once you have reviewed your pieces, measure the back piece for the full width and length. This will be the width and length needed for your back panel of quilting.

We are doing a size 12 so our full back width is 25" and our length is 38".

For our size we need the row to be slightly wider than 25" so we are doing four 6 1/2" finished half square triangles across to give us 26 1/2" width.



For our length we will need 6 rows to give us 39 1/2"

We will use 6 1/2" finished size HST for all our other pieces.

\*For wider or longer coat patterns you will need to adjust the size of the HST.

# Mountain Peaks

## Pattern Matching

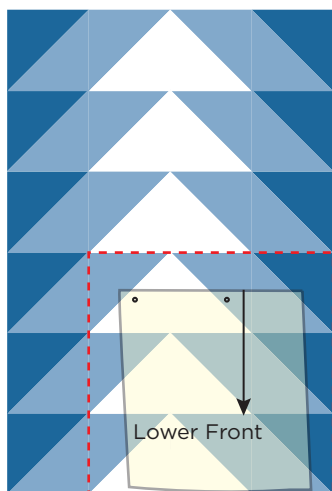
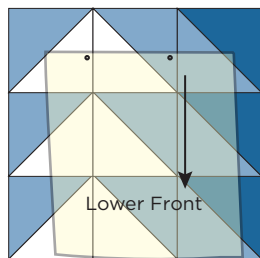
Once we have our full back piece block we can start to match the pattern to our other pieces. The easiest way to do this is have all bottom edges lined up with the bottom of your quilt blocks.

However with Vogue 1563 we have 2 separate front pieces to make a pocket opening.

(You can exclude the pocket, join both these pieces, line the bottom edges up and skip this step)

To match these pieces we will line the bottom edge of the lower front up with the bottom edge of our quilt piece.

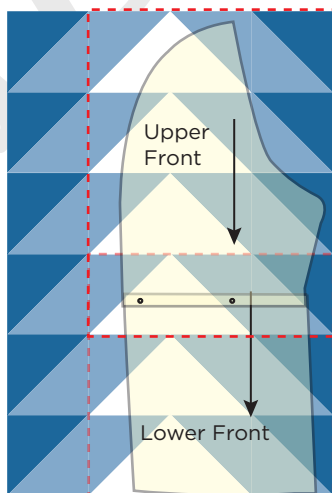
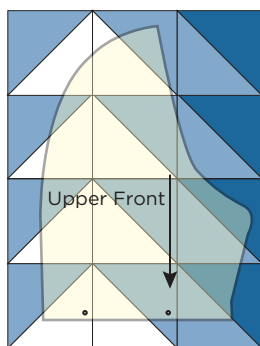
This shows us we need to make 2 piece's that are 3 blocks wide x 3 rows high



We then take our upper front and overlap the seam allowance on the lower front.

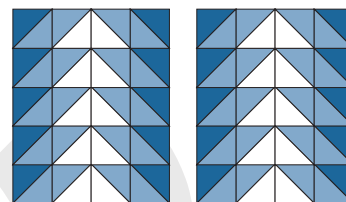
This shows us where the bottom of the upper front will lie.

We will need to make 2 piece's that are 3 blocks wide x 4 rows high

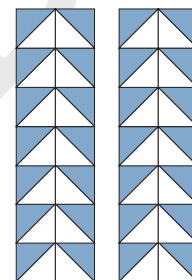


Continue matching your patten pieces up until you have block and row amounts for each piece.

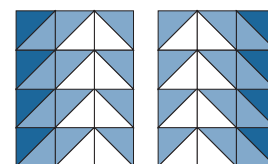
Sleeve:  
1 row wide x 5 full rows high.



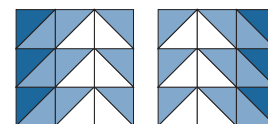
Upper collar and front facing:  
2 blocks wide x 7 rows high



Upper Front: 3 blocks wide x 4 rows high



Lower Front: 3 blocks wide x 3 rows high



Pocket: 2 blocks wide x 1 row high



## Quilting

To quilt these pieces we can either do a traditional quilt sandwich of:

Quilt top > Batting > Backing

With this method we would bind the seams and not line the jacket

Or we can do:

Quilt top > Batting

This is the method we will be using and we will line the jacket.

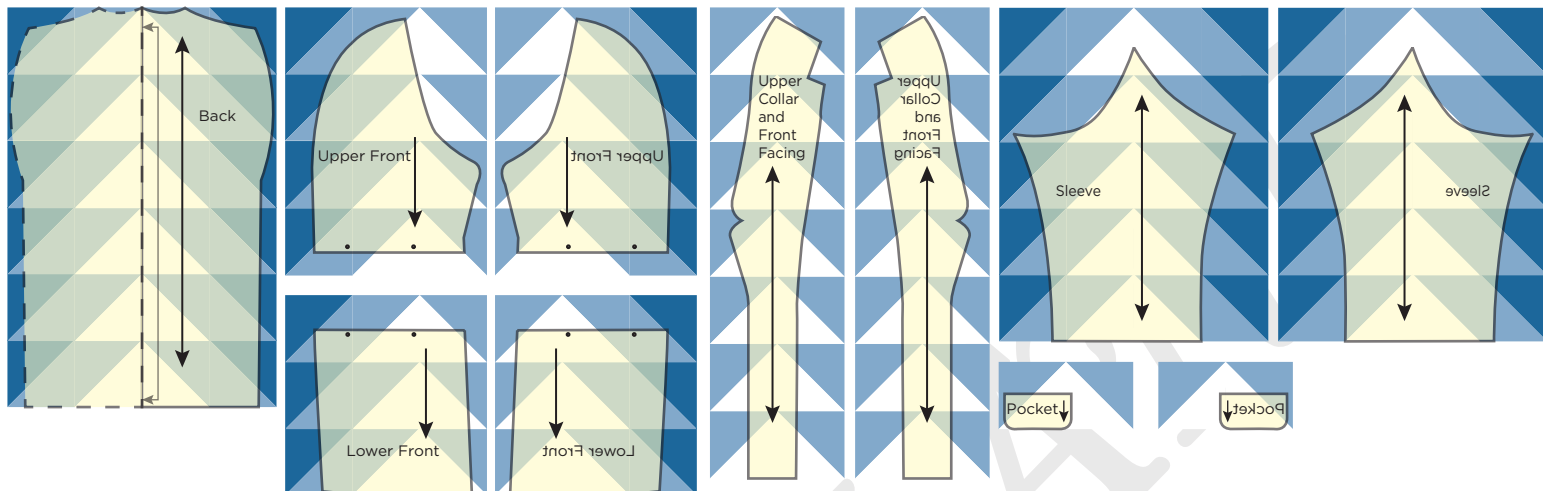
## Tips:

Do not cut out any pattern pieces until you have quilted your blocks.

Do not cut any pieces on the fold. Cut on the flat by tracing your pattern piece and then flipping it to trace the other side.

# Mountain Peaks

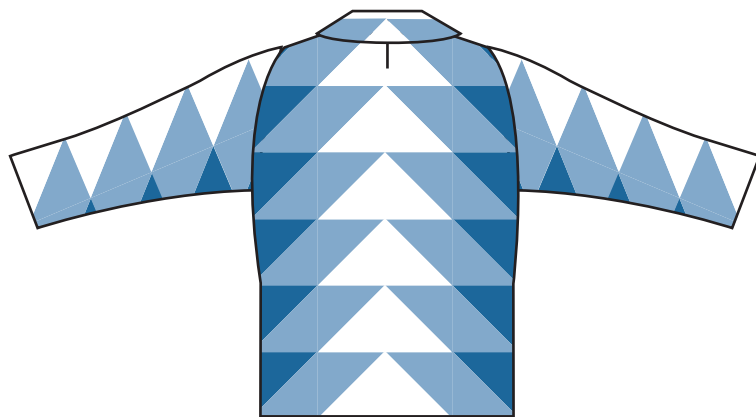
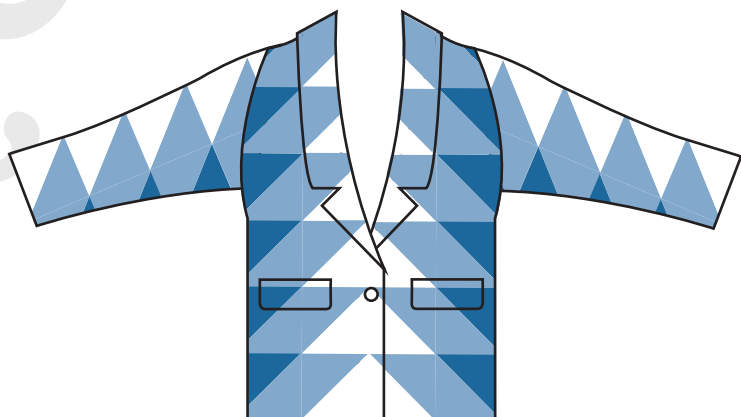
## Pattern Pieces - image 1



Once you have cut your pieces out, line up and pin the edges together before sewing. This will ensure the seams are matching and give your jacket a seam-less appearance.

If you did not line the jacket, bind the edges and seam allowance once finished.

If you are lining the jacket, line as normal but do not use any interfacing. The batting is enough to stabilise the jacket.



©Fabricland 2020.

Every effort has been made to ensure that all projects are error free. As we have no control over the execution of instructions no warranty can be given, nor results guaranteed. This pattern is not available for commercial resale. You cannot copy and sell or digitally distribute this pattern. You may sell items you make with this pattern.