

FABRICLAND

Difficulty: 

Outdoor Placemat



 DIY Project

Outdoor Placemat

Material Requirements - for 2 placemats

Gone Wild 17834-Black - Main Fabric 0.5m



Gone Wild 17836-Black - Backing Fabric 0.5m



Gone Wild 17835-Multi - Binding Fabric 0.2m

Pellon Matte Vinyl Fuse 1 roll

*Prym Color Snaps 1 packet

*for more placemats you will not need more of these.

Please read instructions carefully before cutting

Cutting Instructions - for 1 placemat

From Front & Back cut:

Front / Back: (1) 12" x 20" rectangle

Plate Pocket: (1) 10^{1/2}" x 8^{1/2}" rectangle

Utensil Pocket: (1) 5" x 5" rectangle

From Binding cut:

(2) 34" x 2^{1/2}" rectangles, sew together to make

(1) 67^{1/2}" x 2^{1/2}" rectangle.

Placemat Assembly - Seam Allowance: 1/4"

1 Following the manufacturers guidelines, attach matte vinyl fuse to the right side of all main fabric pieces and lining back fabric piece.



2 Place (1) main plate pocket right sides together with (1) lining plate pocket. Measure halfway along the 10^{1/2}" side and mark down 3". Draw a curve out and up to the top corners.

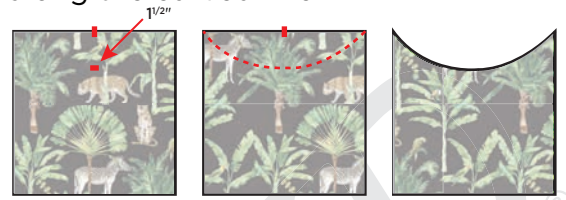
Trim along the curved line.



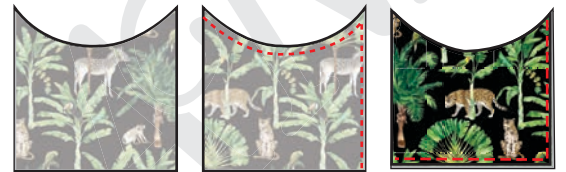
3 Sew across the top curve and down the left-hand side. Turn right way out, press and baste bottom and open side together.



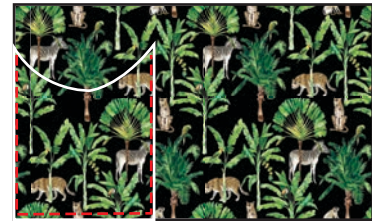
4 Place (1) main utensil pocket right sides together with (1) lining utensil pocket. Measure halfway along the 5" side and mark down 1^{1/2}". Draw a curve out and up to the top corners. Trim along the curved line.



5 Sew across the top curve and down the right hand side. Turn right way out, press and baste bottom and open side together.



6 With the main front panel right side up, line the plate pocket up with the bottom left-hand side of the front panel. Topstitch the pocket down the sides and along the bottom. Do not stitch the curve.



7 Line the utensil pocket up with the bottom right hand side of the front panel. Topstitch the pocket down the sides and along the bottom. Do not stitch the curve.



8 Place main fabric and lining fabric wrong sides together, bind around outside edges. Measure halfway down each 12" side and attach a snap. This will let you fold your mat in half to store while traveling.



©Fabricland 2021.

Every effort has been made to ensure that all projects are error free. As we have no control over the execution of instructions no warranty can be given, nor results guaranteed. This pattern is not available for commercial resale. You cannot copy and sell or digitally distribute this pattern. You may sell items you make with this pattern.