

# Market Bag

Please read instructions carefully before starting

## Material Requirements

Home Decor Fabric Croft Design Prints 0.9m

Carpet Binding Natural 1<sup>1/2</sup>" 1.6m

Cotton Piping Cord 10/32" 1m

## Cutting Instructions

### From Home Decor Fabric cut:

- (2) 16" x 15" main rectangles
- (2) 8" x 15" side rectangles
- (1) 8" x 16" bottom rectangle
- (1) 27" x 11" pocket A rectangle
- (1) 23" x 11" pockets B rectangle

### From Carpet Binding cut:

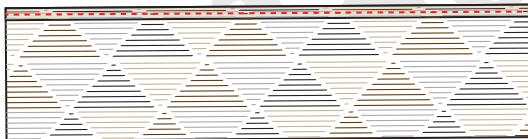
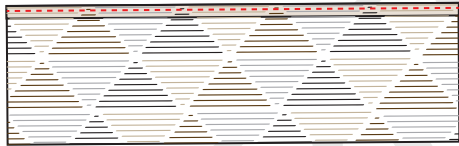
- (2) 22" strips
- (2) 9" strips

### From Cotton Piping Cord cut:

- (2) 14" strips

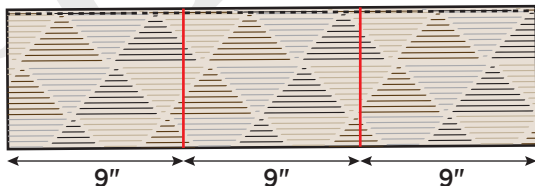
## Bag Assembly - Seam Allowance: 1/2"

Place pocket A and B wrong side up.  
Fold top edge down 1/2", topstitch and press.



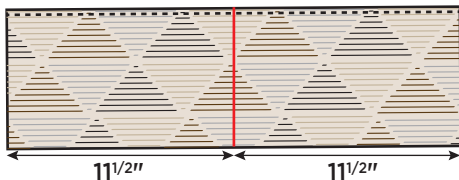
With right side up, mark 9" in from either side of pocket A. This will give you three 9" segments.

Pocket A

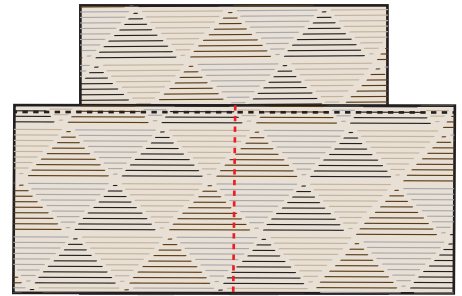


With right side up, mark the half way line on pocket B & (1) main rectangle.

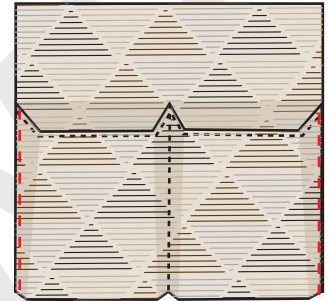
Pocket B



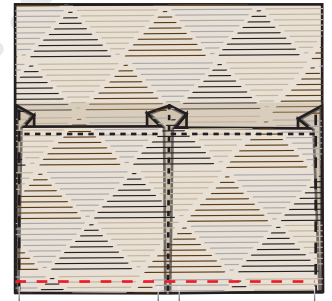
With right sides up, line the bottom of pocket B up with (1) main rectangle. Center and stitch down your middle line to secure.



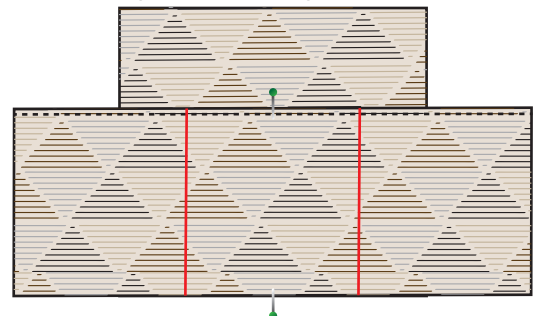
Bring the sides of B in to line up with your main rectangle sides and baste in place.



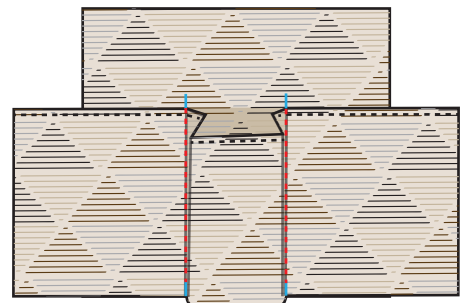
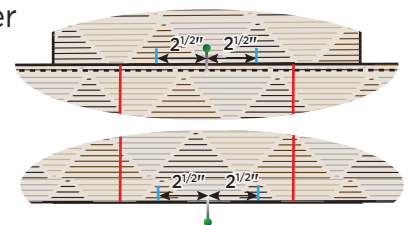
Pleat the bulk at the bottom of B to line up with main rectangle. Pin in place and baste along the bottom to secure.



Line the bottom of pocket A up with (1) main rectangle, and center. Pin your center points at top and bottom of B.

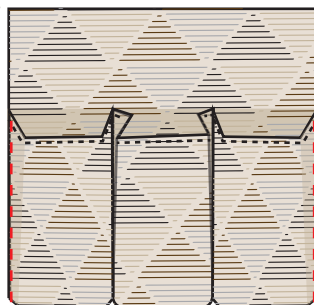


Mark out 2 1/2" from either side of your pins. Bring your 9" lines in to that point. Pin in place and stitch down your lines to secure.

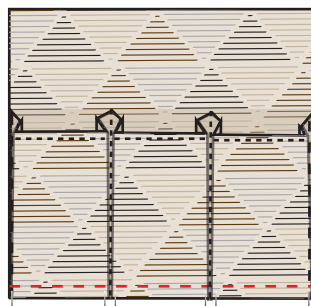


# Market Bag

Bring the sides of A in to line up with your main rectangle sides and baste in place.  
This will create excess.



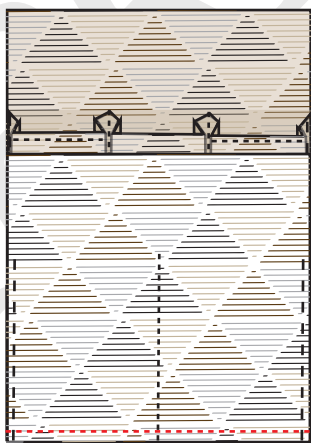
Pleat the excess at the bottom of B to line up with main rectangle. Pin in place and baste along the bottom to secure.



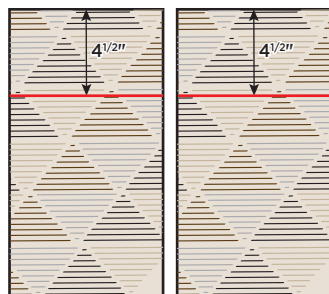
With right sides together line pocket A up with bottom rectangle and sew together along the bottom edge.



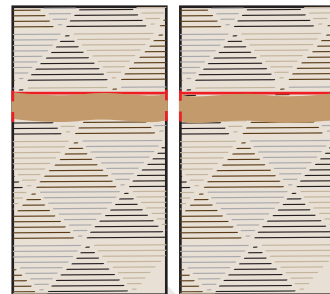
With right sides together line pocket B up with bottom rectangle and sew together along the bottom edge.



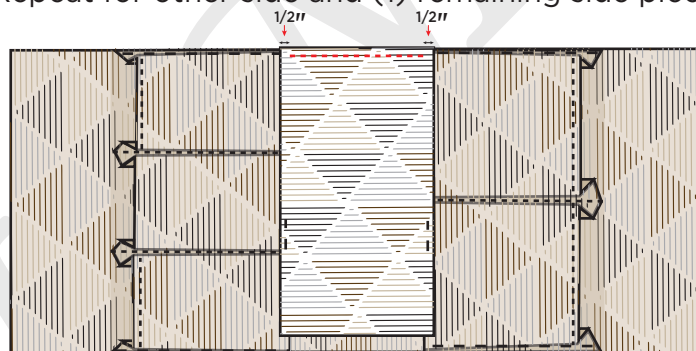
Mark down  $4\frac{1}{2}$ " from the top of both side rectangles.



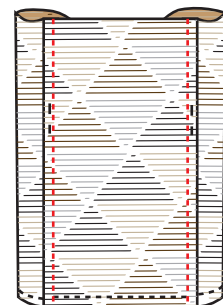
Position top of (1) 9" carpet binding strip along the marking. Bring ends in to meet the side of the rectangle and baste in place. Repeat for 2nd side.



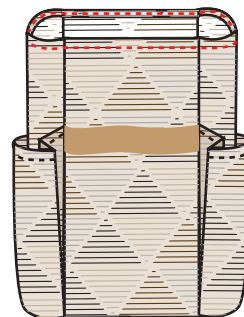
Line the bottom edge of (1) side up with the edge of the bottom rectangle. Stitch to secure, leaving  $\frac{1}{2}$ " seam allowance at either side unstitched. Repeat for other side and (1) remaining side piece.



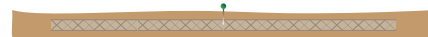
Line the sides of both main panels up with the sides of (1) side rectangle. Stitch to secure. Repeat for 2nd side. Turn bag right way out.



Turn the top edge of your bag down  $\frac{1}{2}$ " and top stitch around.



Take (1) 22" carpet binding strip and (1) 14" cotton piping cord. Match centers.



Fold binding in half over cord, stitch the length of the cord to secure. Repeat for 2nd strap.



On the wrong side of both main flaps find the centre. Measure out  $2\frac{1}{4}$ " from the centre and attach handles with an 'x' box.

