

Dino Costume

Material Requirements

McCalls 6106

Arctic Fleece Solids Ultramarine Green

Right Side:



Wrong Side:



Medium Weight Felt Red

Hook & Loop tape

Fiber Fill

1
0.4m

0.2m
1lb

Please read instructions carefully before starting

Cutting Instructions

From Arctic Fleece Solids cut:

(2) 24" x 11" rectangles

(4) 14" x 3" rectangles

(2) 8" x 6" rectangles

(2) Hood Back

(1) Hood Front

(1) 7" circle

From Medium Weight Felt cut:

(2) 24" x 3 1/2" rectangles

(2) 6" x 3 1/2" rectangles

(1) 16" x 3 1/2" rectangle

Spike Assembly - Seam Allowance: 1/2"

1 Take (1) 24" x 3 1/2" rectangle, starting 1/4" up from the bottom of your strip, draw spikes that are 3 1/4" tall and 2" wide.

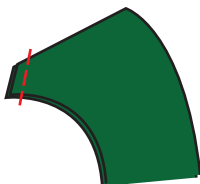
Trim away excess to create a spiked strip.



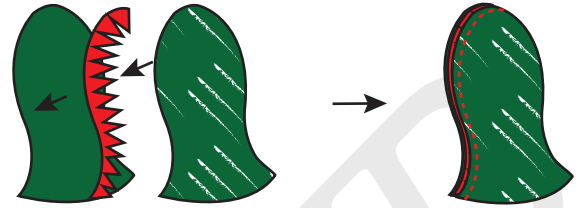
Repeat with all felt strips.

Hood Assembly - Seam Allowance: 1/2"

1 Fold hood front right sides together and stitch dart.



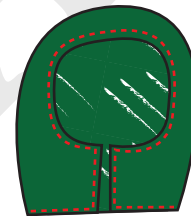
2 Place (1) 16" x 3 1/2" spiked rectangle on the right side of (1) hood back. Make sure the spikes are facing in. Place (1) hood back piece on top, matching notches, right sides together and stitch.



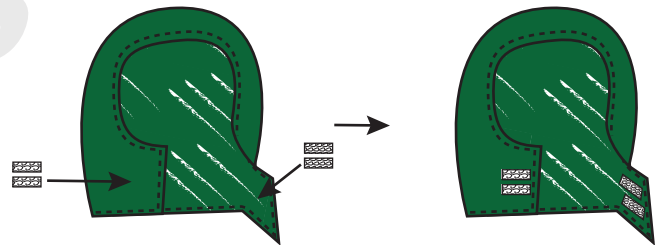
3 Pin hood back to hood front, matching notches and stitch together. Turn right way out.



4 Fold edges back 1/2" and top-stitch to finish.



5 Cut (2) 1 3/4" hook and loop tape strips. Stitch (2) hook strips to the right side of the hood flaps. Stitch (2) loop strips to the wrong side of the hood flaps.



Wrist Cuff Assembly - Seam Allowance: 1/2"

1 Fold (1) 8" x 6" fleece rectangle, right side together along the 8" side.



2 Sandwich (1) 6" x 3 1/2" felt rectangle into the fold and stitch up the fold with a 1/4" seam.



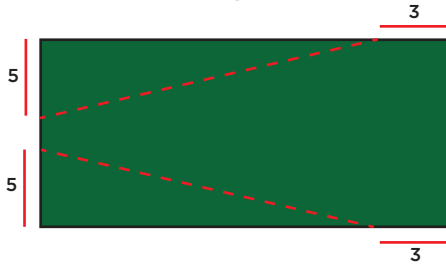
Dino Costume

3 Cut 5 1/2" length of hook and loop. Stitch (1) hook strip to the right side of the cuff. Stitch (1) loop strip to the opposite end of the cuff on the wrong side.

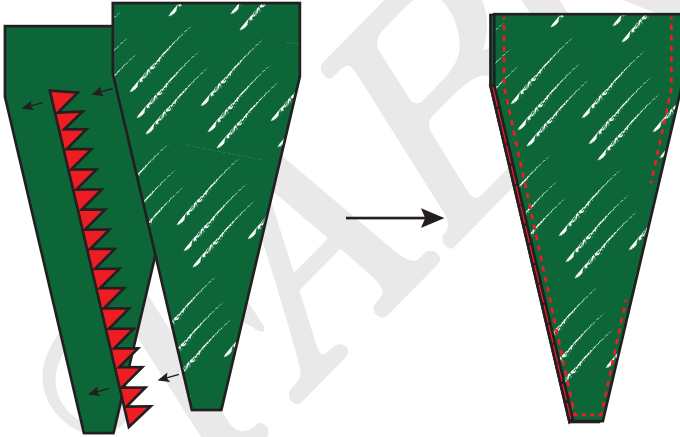


Tail Assembly - Seam Allowance: 1/2"

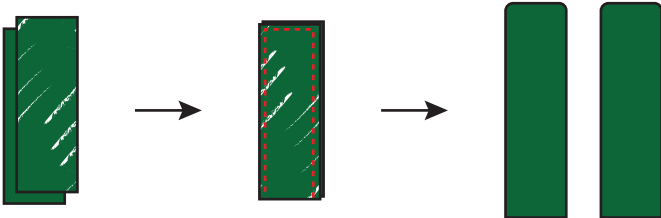
1 Place (2) 24" x 11" fleece rectangles right side together. Measure in 3" from the right hand side, on the top and bottom, and mark. Measure up and down 5" on the left-hand side and mark. Join marks and cut along the line making your tail pieces.



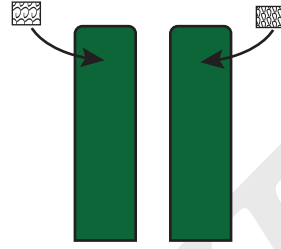
2 Sandwich (1) 24" x 3 1/2" spiked rectangle between fleece pieces and stitch. Stitch along the opposite side, leaving a 3" gap. Be careful to not sew over the top of the spikes.



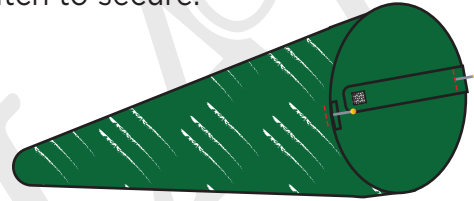
3 Place (2) 14" x 3" fleece rectangles right sides together and sew around 3 sides leaving (1) short end open. Turn right sides out to make a strap. Repeat for remaining (2) 14" x 3" fleece rectangles.



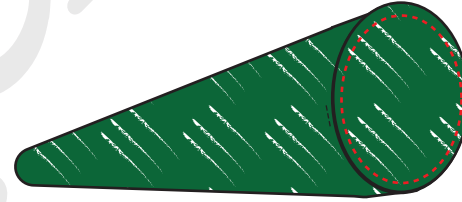
4 Cut (1) 1" hook and loop tape strip. Stitch (1) hook strip to (1) strap and (1) loop strip to the other strap.



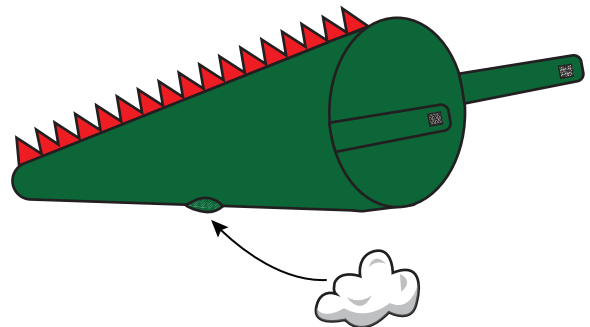
5 Measure halfway down the 11" ends of the tail. Pin the open end of (1) strap to either side of the tail. Make sure the hook and loop tape is inside the tail and will match once turned right way out. Stitch to secure.



6 Pin (1) 7" circle right sides together with tail opening. Stitch around to secure



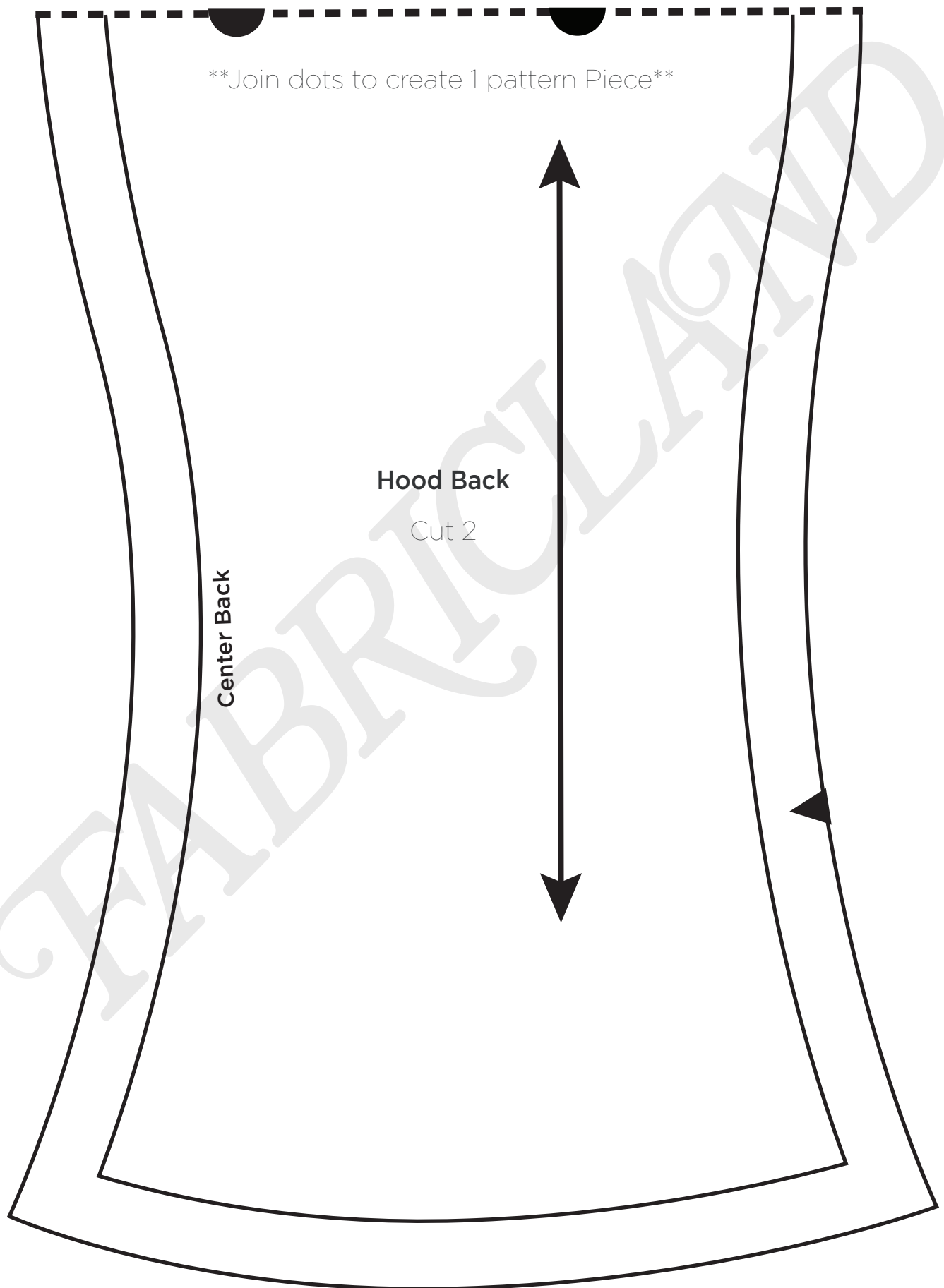
7 Turn right way out through the gap. Stuff with fiber fill. Topstitch gap closed.



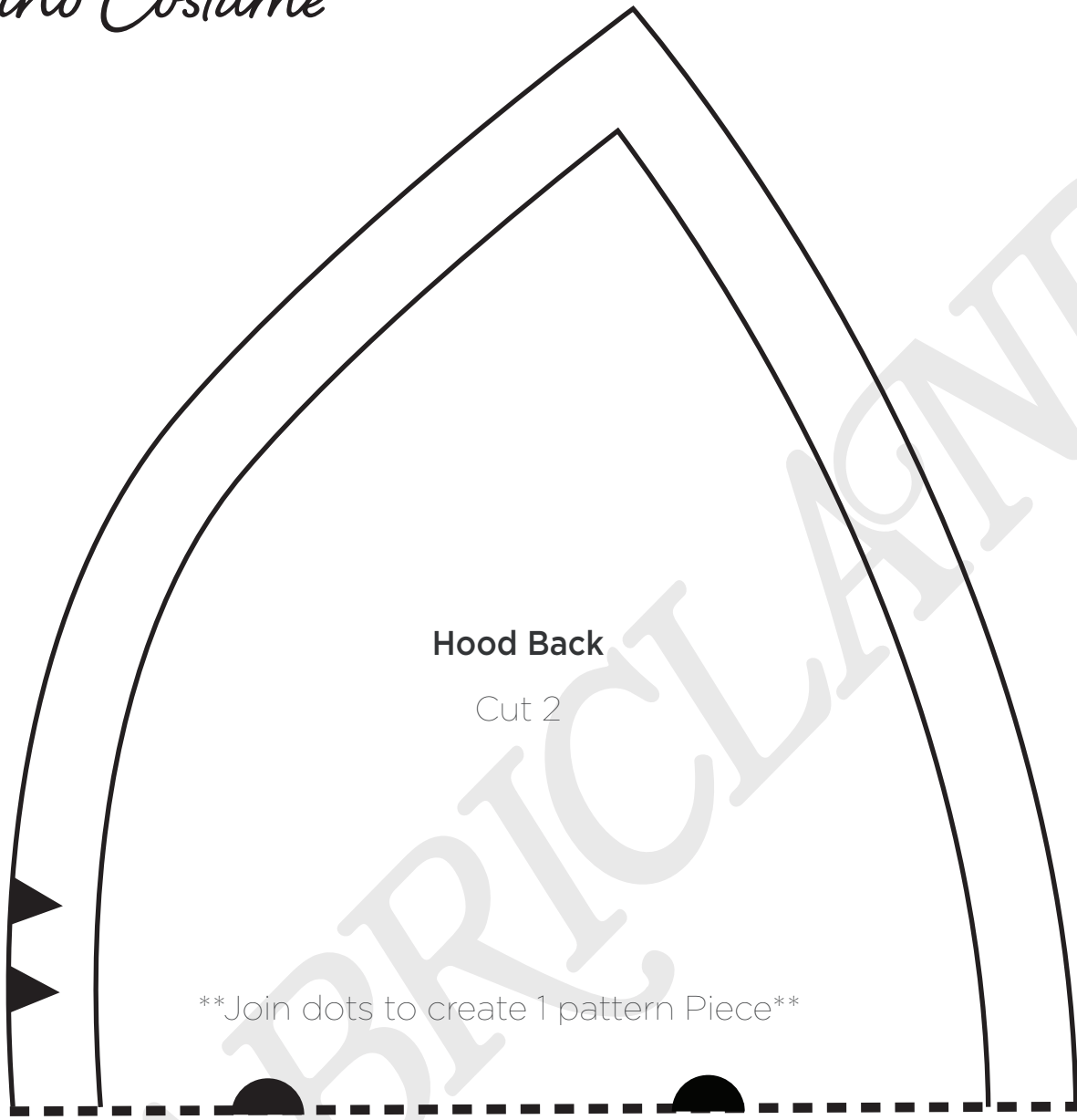
©Fabricland 2021.

Every effort has been made to ensure that all projects are error free. As we have no control over the execution of instructions no warranty can be given, nor results guaranteed. This pattern is not available for commercial resale. You cannot copy and sell or digitally distribute this pattern. You may sell items you make with this pattern.

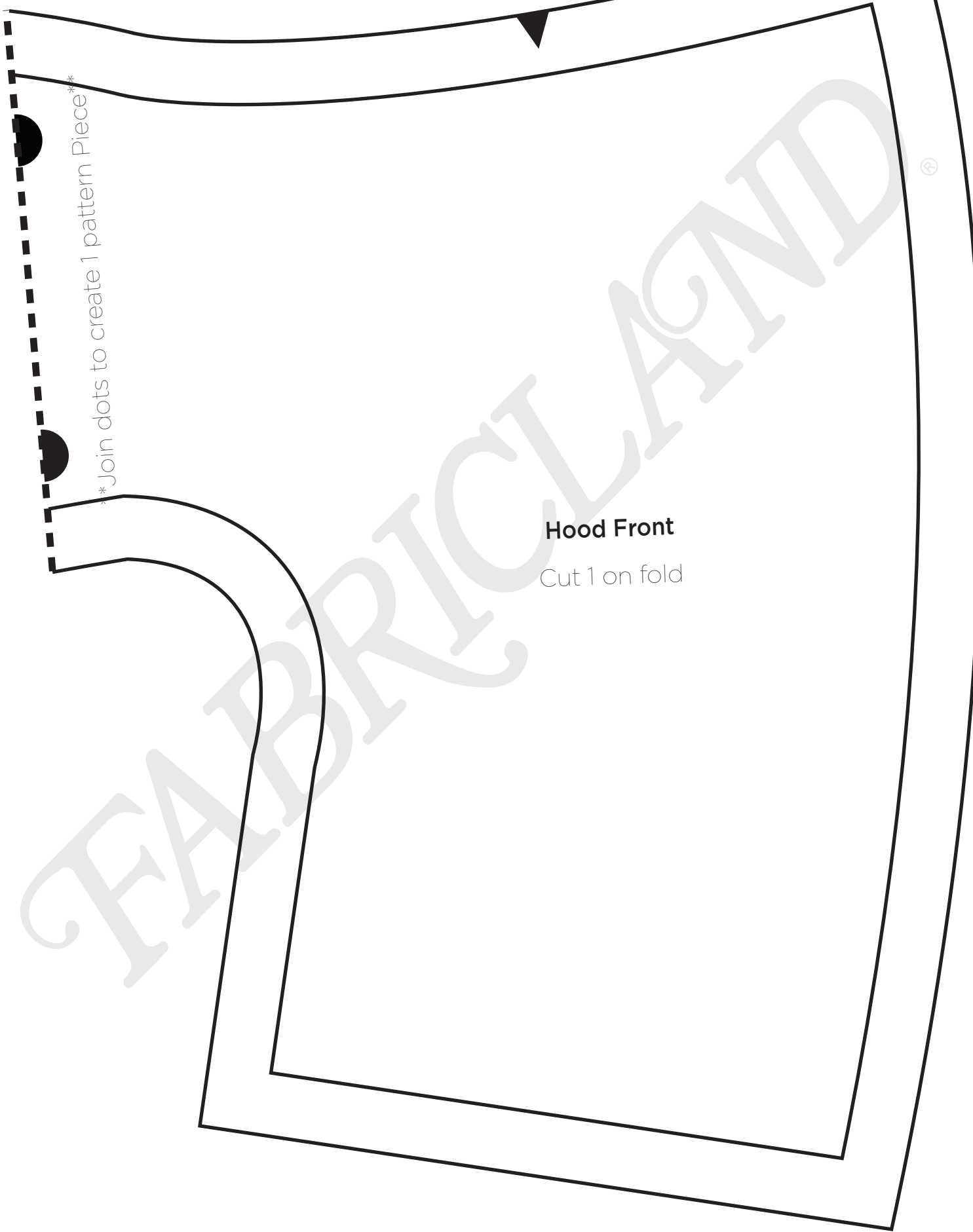
Dino Costume



Dino Costume



Dino Costume



*Join dots to create 1 pattern Piece**

Hood Front

Cut 1 on fold

Dino Costume

