

Winter Village

Materials: Winter Village



Fabric A
Winter Village -
Blocks Panel -
Aqua



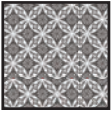
Fabric B
Winter Village -
River - Aqua



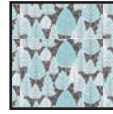
Fabric C
Winter Village -
River - Rose



Fabric D
Winter Village -
River - Charcoal



Fabric E
Winter Village -
Orange Peel -
Charcoal



Fabric F
Winter Village -
Forest - Charcoal



Fabric G
Winter Village -
Village - Charcoal

Fabric Requirements

Fabric A Blocks Panel - Aqua	1 panel
Fabric B River - Aqua	0.2m
Fabric C River - Rose	0.2m
Fabric D River - Charcoal	0.2m
Fabric E Orange Peel - Charcoal	0.5m

Binding

Fabric F Forest - Charcoal	0.2m
-----------------------------------	------

Backing

Fabric G Village - Charcoal	0.6m
------------------------------------	------

Please read instructions carefully before cutting

Cutting Instructions

Please note: All strips are cut across the width of fabric (WOF) from selvedge to selvedge unless otherwise noted.

From Fabric A cut:

(3) fussy cut $6\frac{1}{2}''$ x $6\frac{1}{2}''$ squares

From Fabric B cut:

(1) $6\frac{1}{2}$ x WOF strips. Sub cut:
(3) $6\frac{1}{2}''$ x $9\frac{1}{2}''$ rectangles

From Fabric C cut:

(3) $1\frac{3}{4}$ x WOF strips. Sub cut:
(2) $1\frac{3}{4}''$ x $15\frac{1}{2}''$ rectangles
(2) $1\frac{3}{4}''$ x $22''$ rectangles

From Fabric D cut:

(3) $1\frac{3}{4}$ x WOF strips. Sub cut:
(2) $1\frac{3}{4}''$ x $18''$ rectangles
(2) $1\frac{3}{4}''$ x $24\frac{1}{2}''$ rectangles

From Fabric E cut:

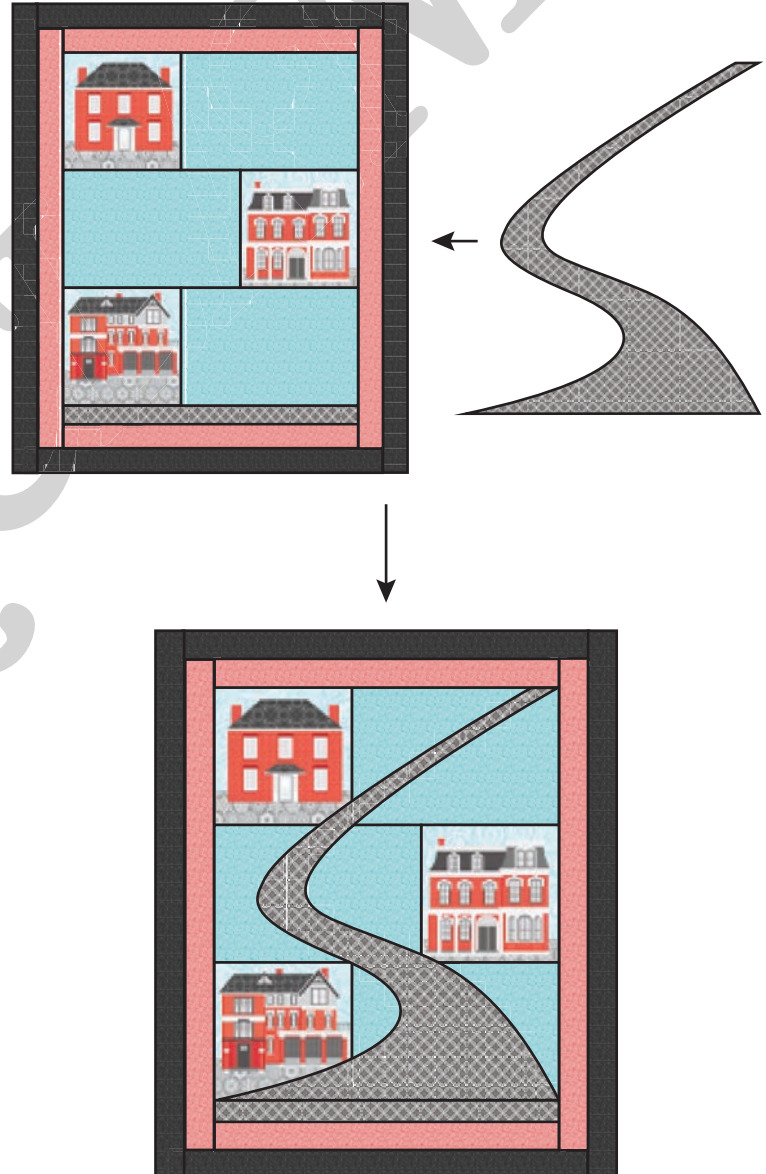
(1) Road
(1) $1\frac{1}{2}''$ x $15\frac{1}{2}''$ rectangle

Road Appliqué

Once you have sewn the quilt top together, refer to the diagram below as a guide for pattern placement.

For best results line the bottom of the road up with the top of (1) $1\frac{1}{2}''$ x $15\frac{1}{2}''$ rectangle E.

Use your favourite method to stitch the appliqué road to the quilt top.

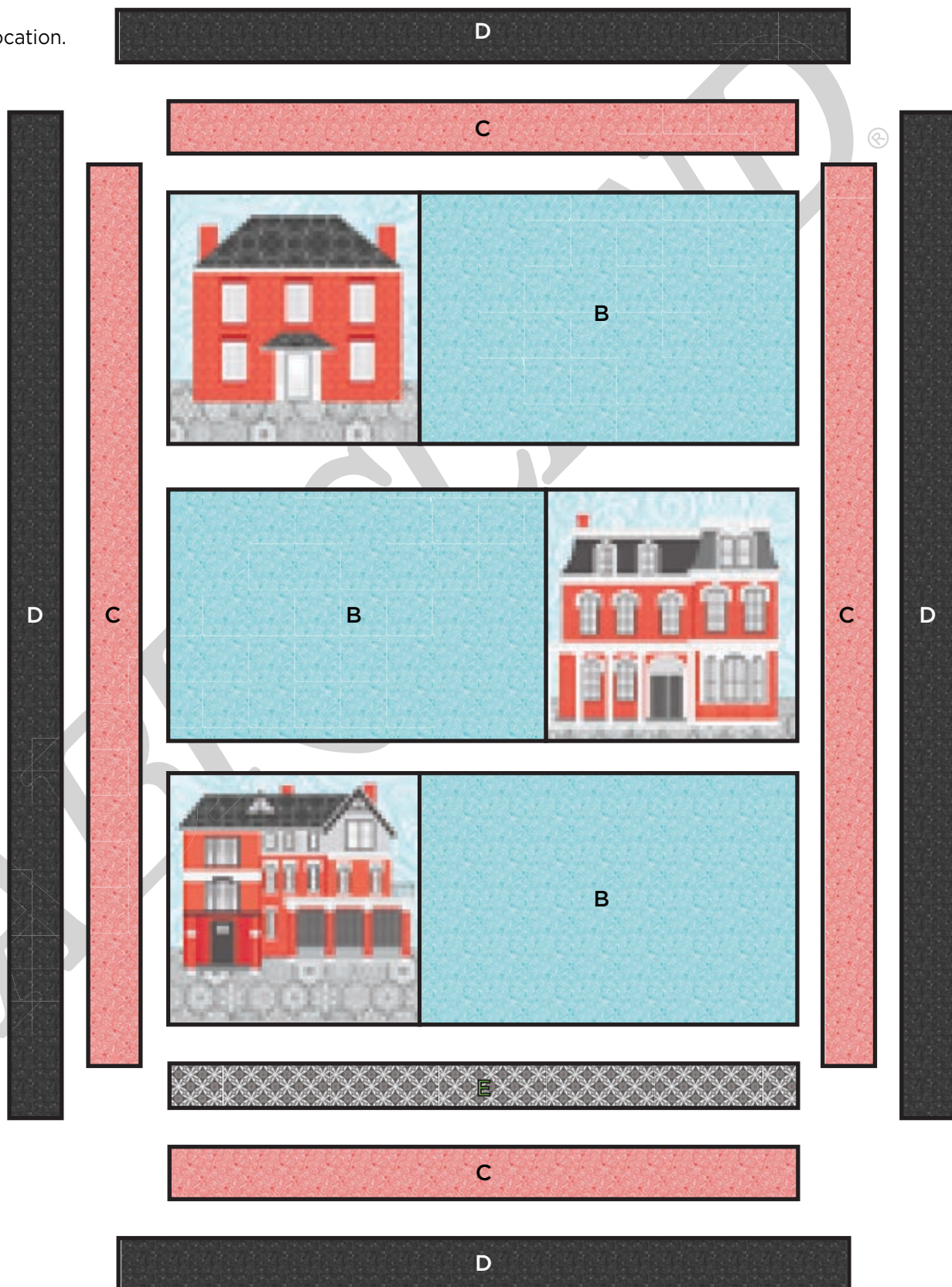


Winter Village

Wall Hanging Top Layout

*Follow Layout while assembling top.

- Use Layout for block location.
- Sew blocks and rows together to create top.
- Layer and quilt as desired.
- Bind as desired.



Finished Wall Hanging size: 20" x 24"

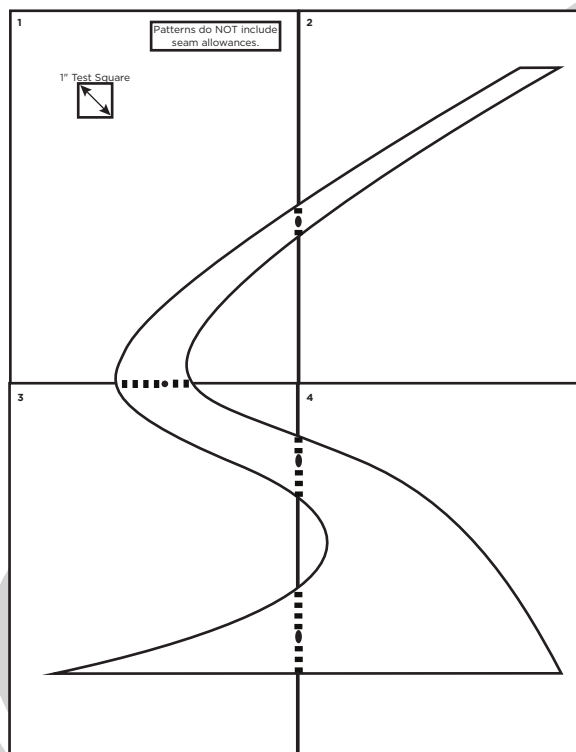
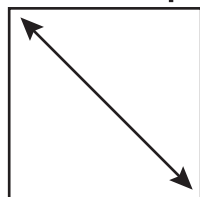
For more detailed instructions visit our blog.

1

Winter Village

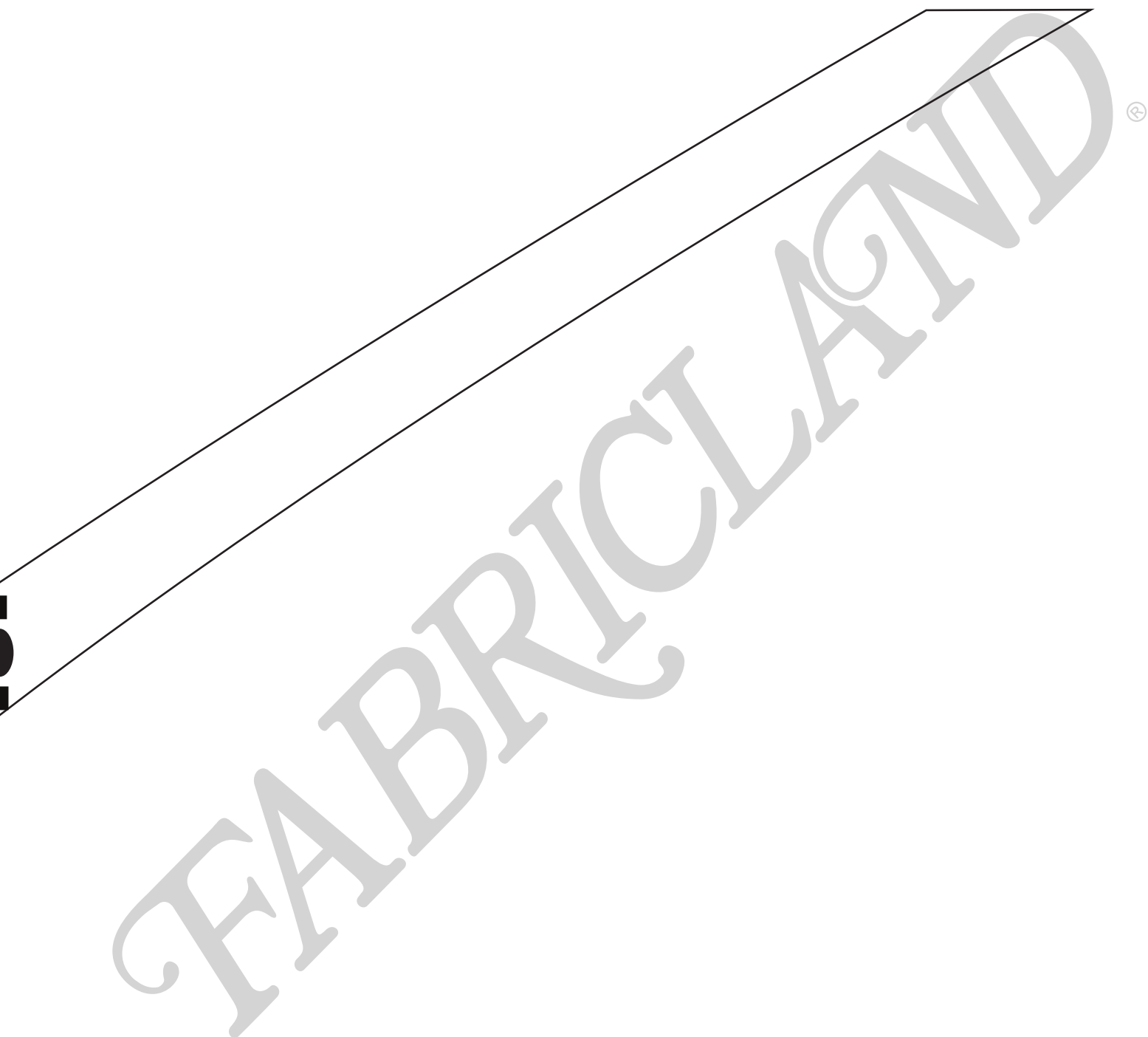
Patterns do NOT include seam allowances.

1" Test Square



2

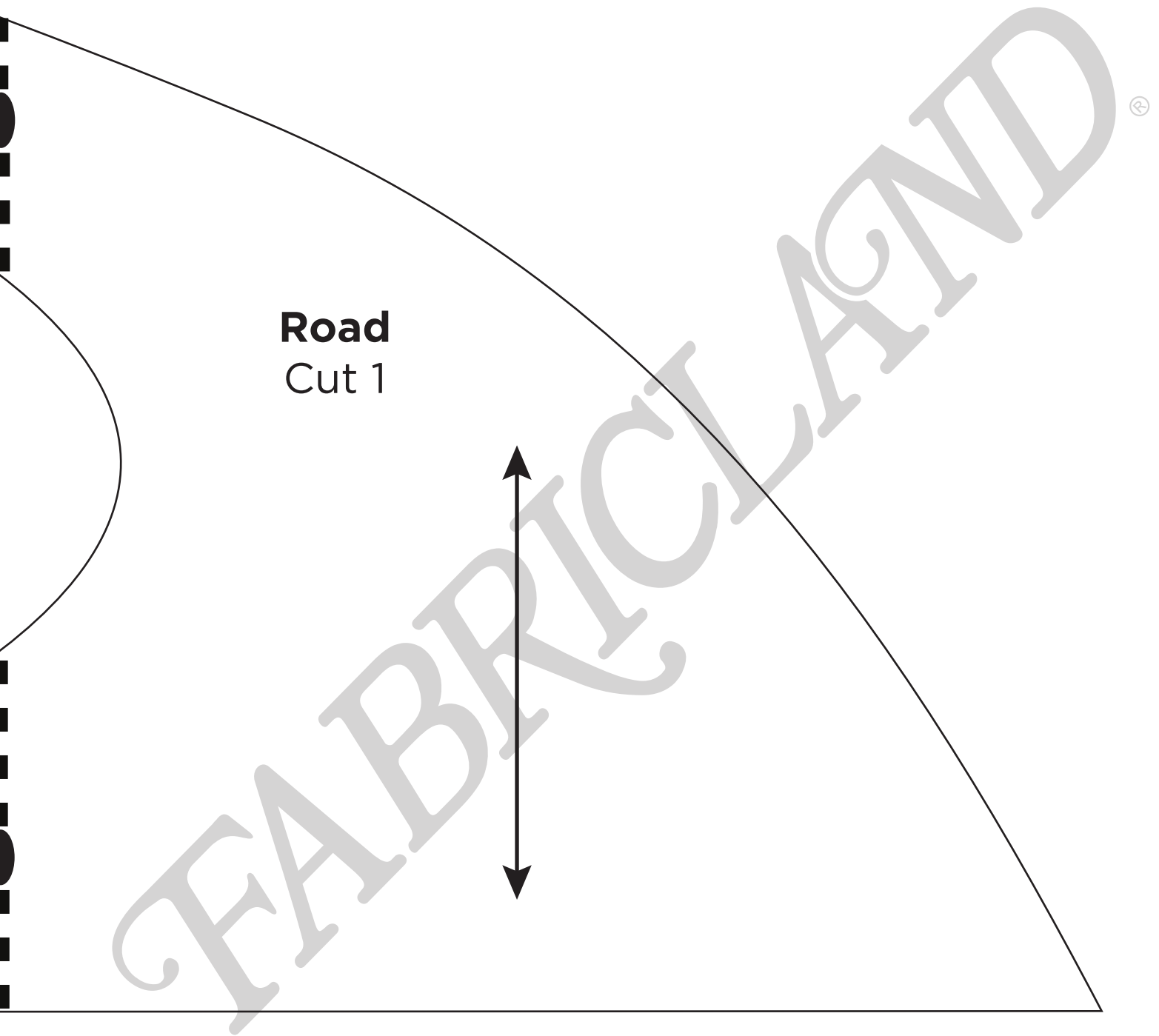
Winter Village



3 Winter Village

FABRICLAND®

4 Winter Village



©Fabricland 2021.

Every effort has been made to ensure that all projects are error free. As we have no control over the execution of instructions no warranty can be given, nor results guaranteed. This pattern is not available for commercial resale. You cannot copy and sell or digitally distribute this pattern. You may sell items you make with this pattern.