

FABRICLAND

Difficulty: 

Frosty the Doorman



DIY Project

Frosty the Doorman

Material Requirements

| | |
|---|---|
| Vienna Velvet - Swan lake White | 0.6m |
| Right Side:  | Wrong Side:  |
| Fleece Black | scrap or 0.2m |
| Heavy Weight Felt Black | 0.2m |
| Heavy Weight Felt Red | 0.2m |
| Scrap Fabric | scrap or 0.2m |
| Fiber Fill 1lb bag | 2 bag |
| Poly Pellets | 1 bag |
| Embroidery Thread Black | 1 skein |
| Grosgrain Ribbon | 1m |
| 1/4" Gold Ribbon | 0.5m |
| Beacon 3-in-1 Advanced Craft Glue | 1 bottle |

Please read instructions carefully before cutting

Cutting Instructions

From Swan Lake Swirl:

- (1) Snowman Head
- (1) Snowman Head Base
- (1) Snowman Body
- (1) Snowman Body Base
- (2) 4" x 5" rectangles

From Heavy Weight Felt - Black:

- (1) Hat Base
- (1) Hat Top
- (1) 7¹/₂" x 5¹/₂" rectangle

From Heavy Weight Felt - Red:

- (1) Present Box

From Fleece:

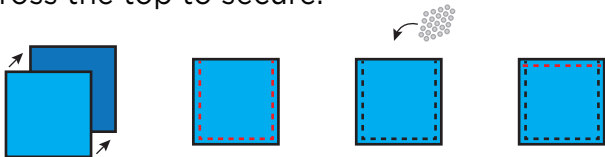
- (1) Nose

From Scrap Fabric:

- (2) 8" x 8" squares

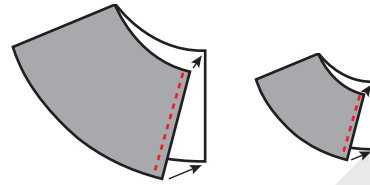
Snowman Assembly - Seam Allowance: 1/2"

- Take (2) 8" x 8" scrap cotton squares and sew around 3 sides. Fill bag with poly pellets and sew across the top to secure.

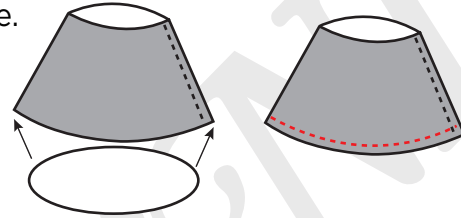


*If your door is heavier add weights into the bag.

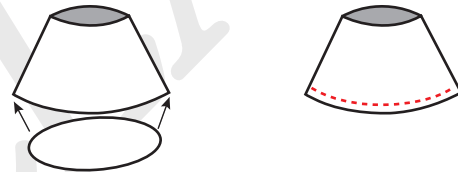
- Fold (1) snowman body right sides together and stitch to secure. Repeat with (1) snowman head.



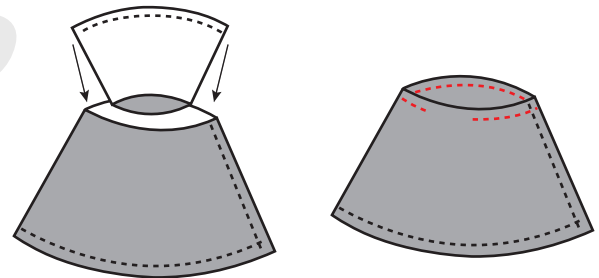
- Place (1) snowman body right sides together with (1) snowman body base and stitch to secure.



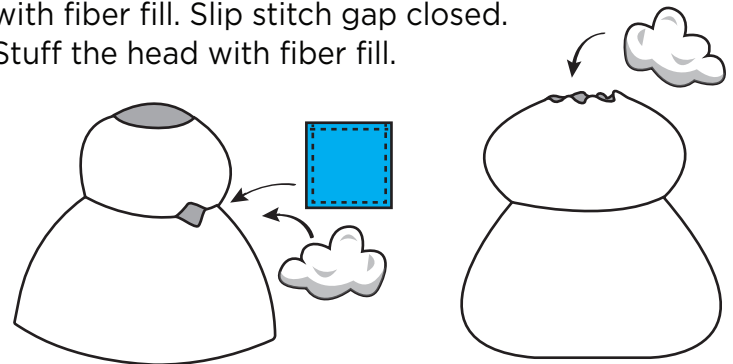
- Place (1) snowman head wrong side to right side with (1) snowman head base and stitch to secure.



- Insert the snowman head inside the snowman body, right sides together. Stitch around to secure, leaving a 2" gap.

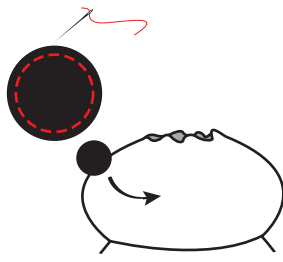


- Turn snowman right way out through the gap. Insert the weight bag into the body and stuff with fiber fill. Slip stitch gap closed. Stuff the head with fiber fill.



Frosty the Doorman

6 Using a hand needle and thread, gather (1) nose and stuff with fiber fill. Stitch closed and secure to the snowman head.



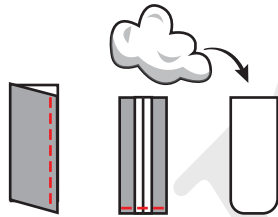
7 Embroider eyes above the nose and a mouth below.



8 Using a hand needle and thread, gather the top of the head. Stitch closed.



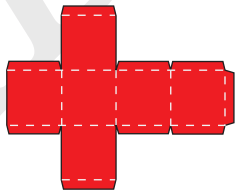
9 Fold (1) 4" x 5" rectangle right side together and stitch down the length. With the seam in the middle sew across the bottom edge. Turn right way out and stuff with fiber fill. Repeat for 2nd arm.



10 Tuck in the open ends of the arms and either topstitch or slip stitch closed.



11 Fold the present box along the dotted lines and glue together to create a box.



12 Glue metallic flat braid around the box in the style of a wrapped present.



13 Glue the arms to either side of the box.



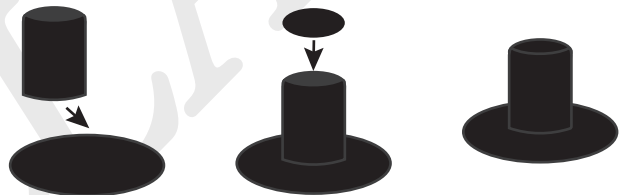
14 Slip stitch or glue the arms to the snowman's body.



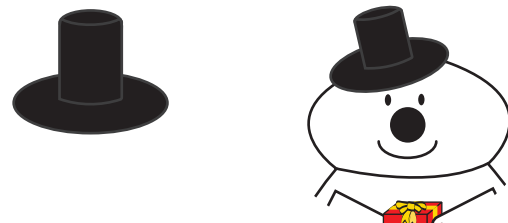
15 Wrap the 7 1/2" x 5 1/2" heavy weight felt rectangle into a tube and glue in place.



16 Glue the tube to the hat base, then glue the hat top to the opposite side of the tube.



17 Glue or slip stitch the hat over the top of the closed gathering on top of the snowman's head.



18 Take the ribbon and tie around the snowman's neck. Pulling tight to make a big jolly head and big fluffy belly.



Frosty the Doorman

©Fabricland 2021.

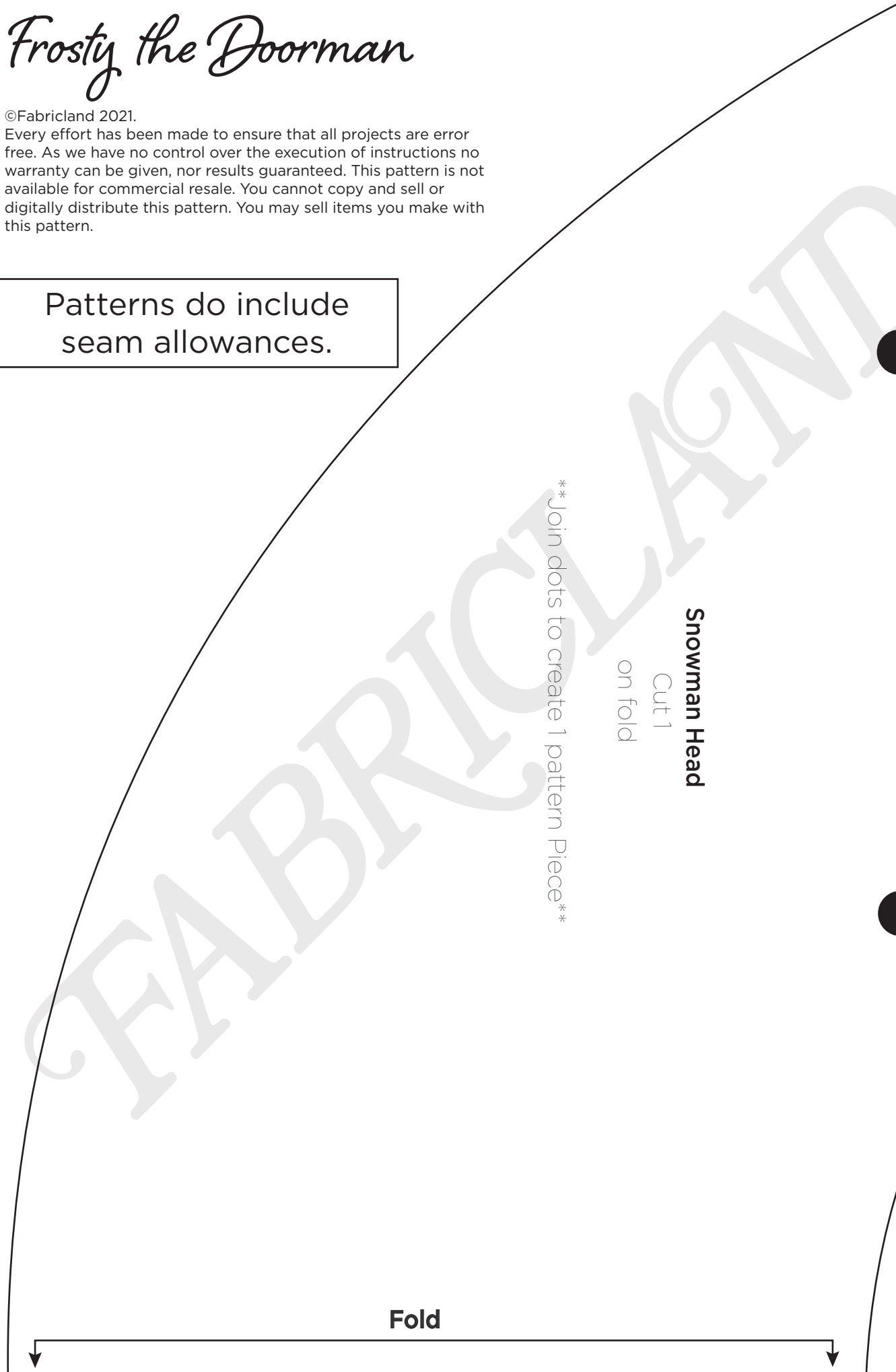
Every effort has been made to ensure that all projects are error free. As we have no control over the execution of instructions no warranty can be given, nor results guaranteed. This pattern is not available for commercial resale. You cannot copy and sell or digitally distribute this pattern. You may sell items you make with this pattern.

Patterns do include
seam allowances.

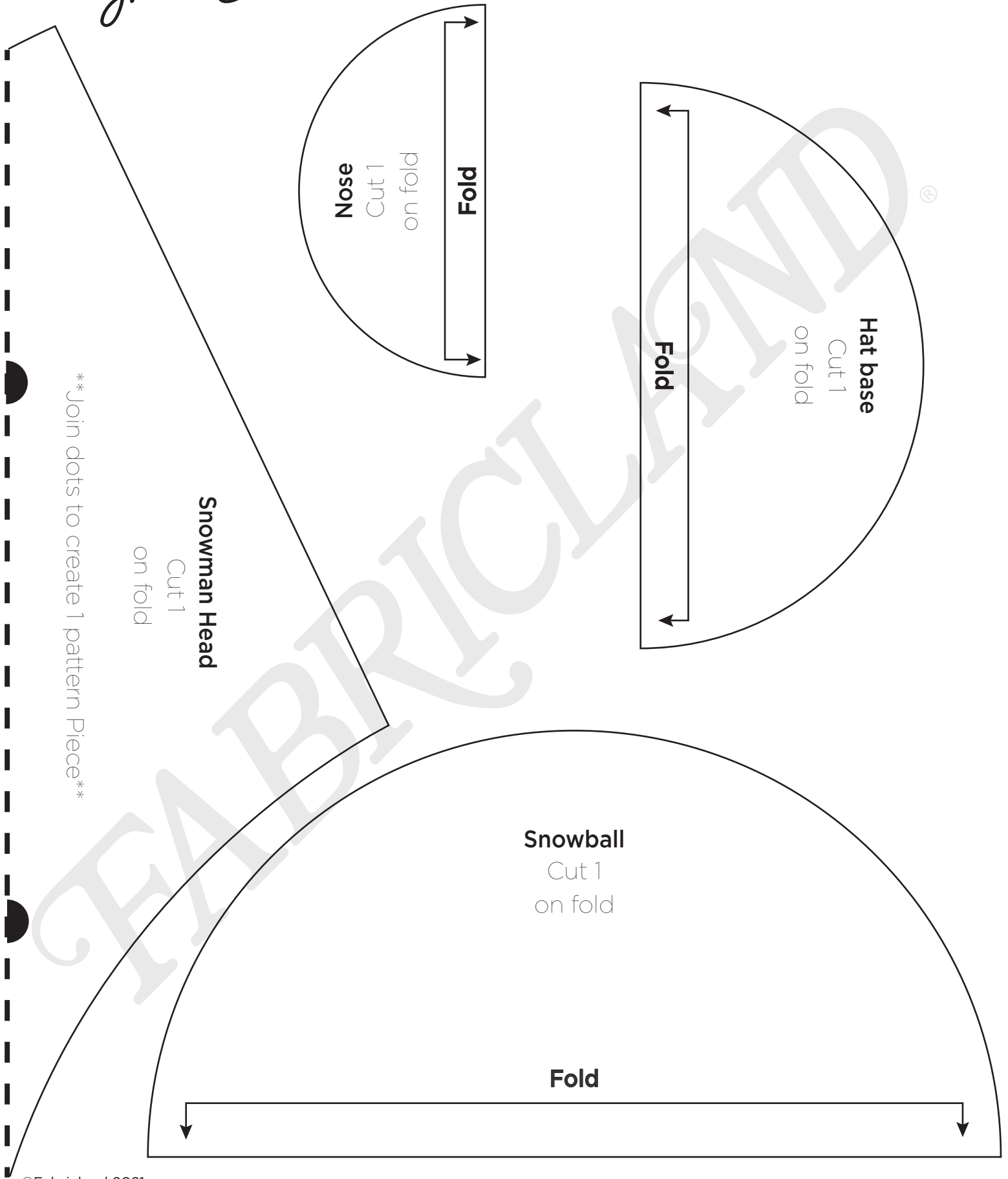
Join dots to create 1 pattern Piece

Snowman Head
Cut 1
on fold

Fold

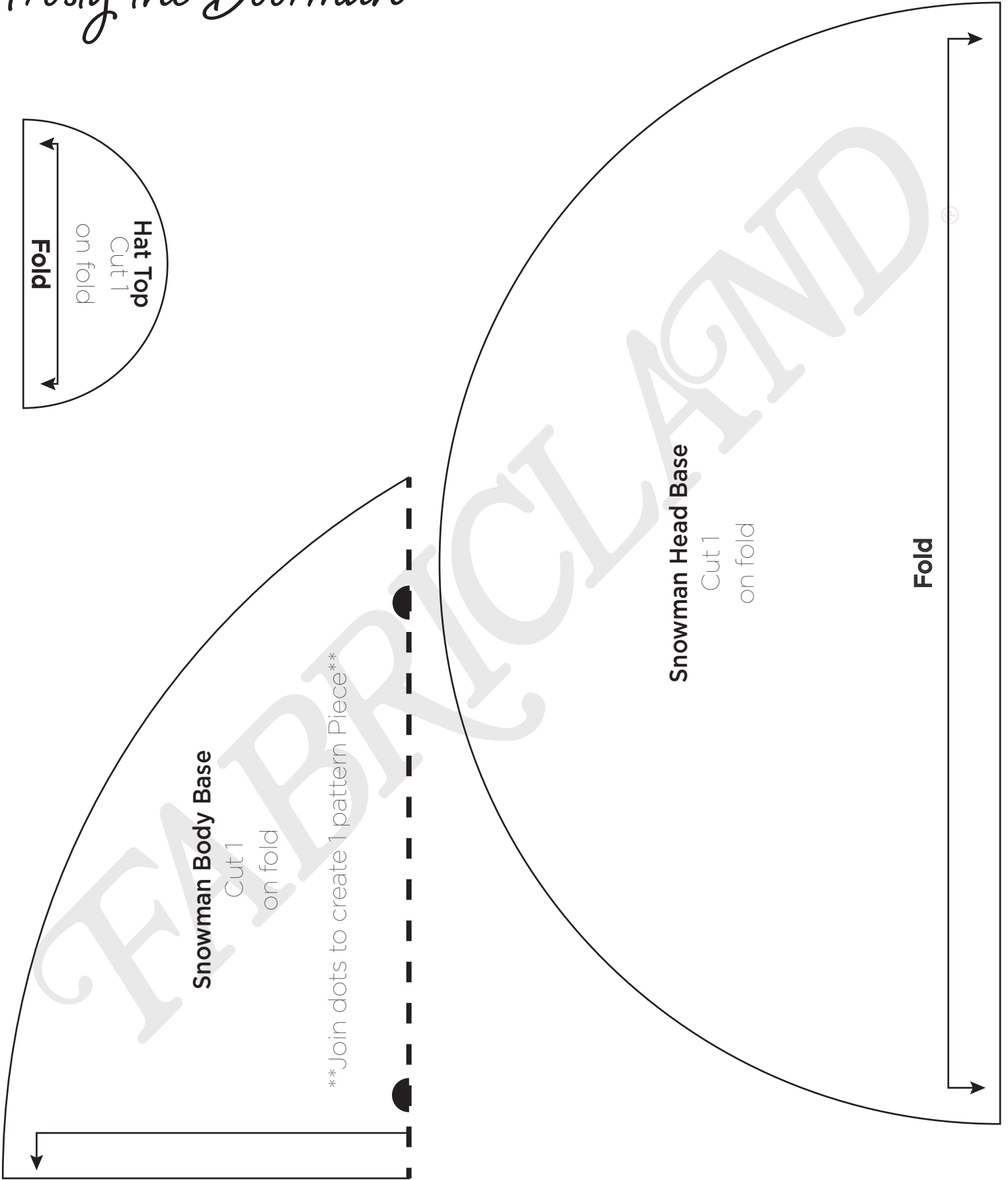


Frosty the Doorman



Join dots to create 1 pattern Piece

Frosty the Doorman

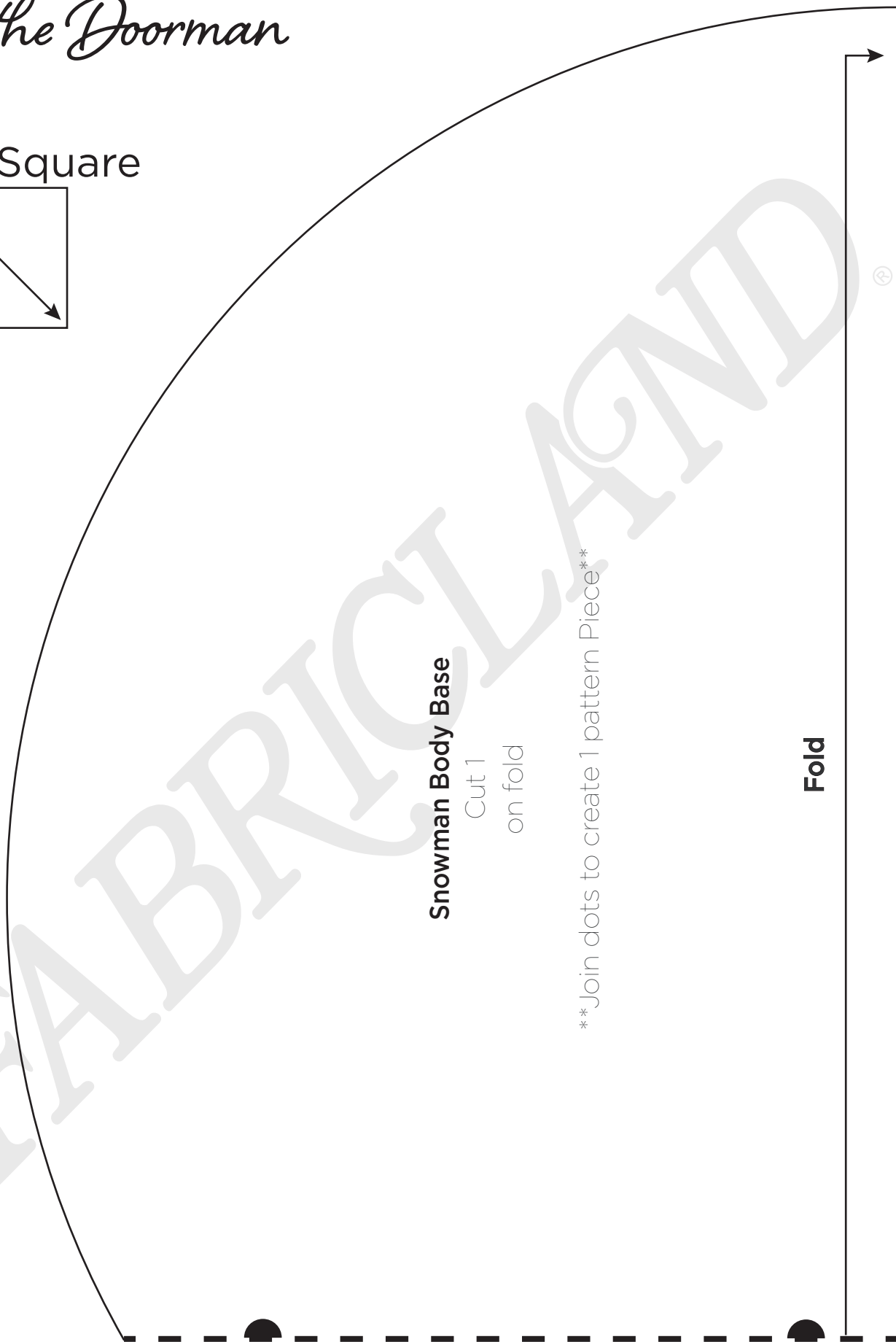
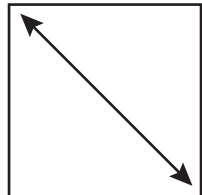


©Fabricland 2021.

Every effort has been made to ensure that all projects are error free. As we have no control over the execution of instructions no warranty can be given, nor results guaranteed. This pattern is not available for commercial resale. You cannot copy and sell or digitally distribute this pattern. You may sell items you make with this pattern.

Frosty the Doorman

1" Test Square



Snowman Body Base

Cut 1

on fold

Join dots to create 1 pattern Piece

Fold

3

Frosty the Doorman

Snowman Body

Cut 1
on fold

Join dots to create 1 pattern Piece

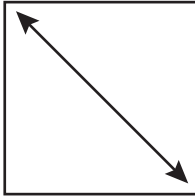
Fold

©Fabricland 2021.

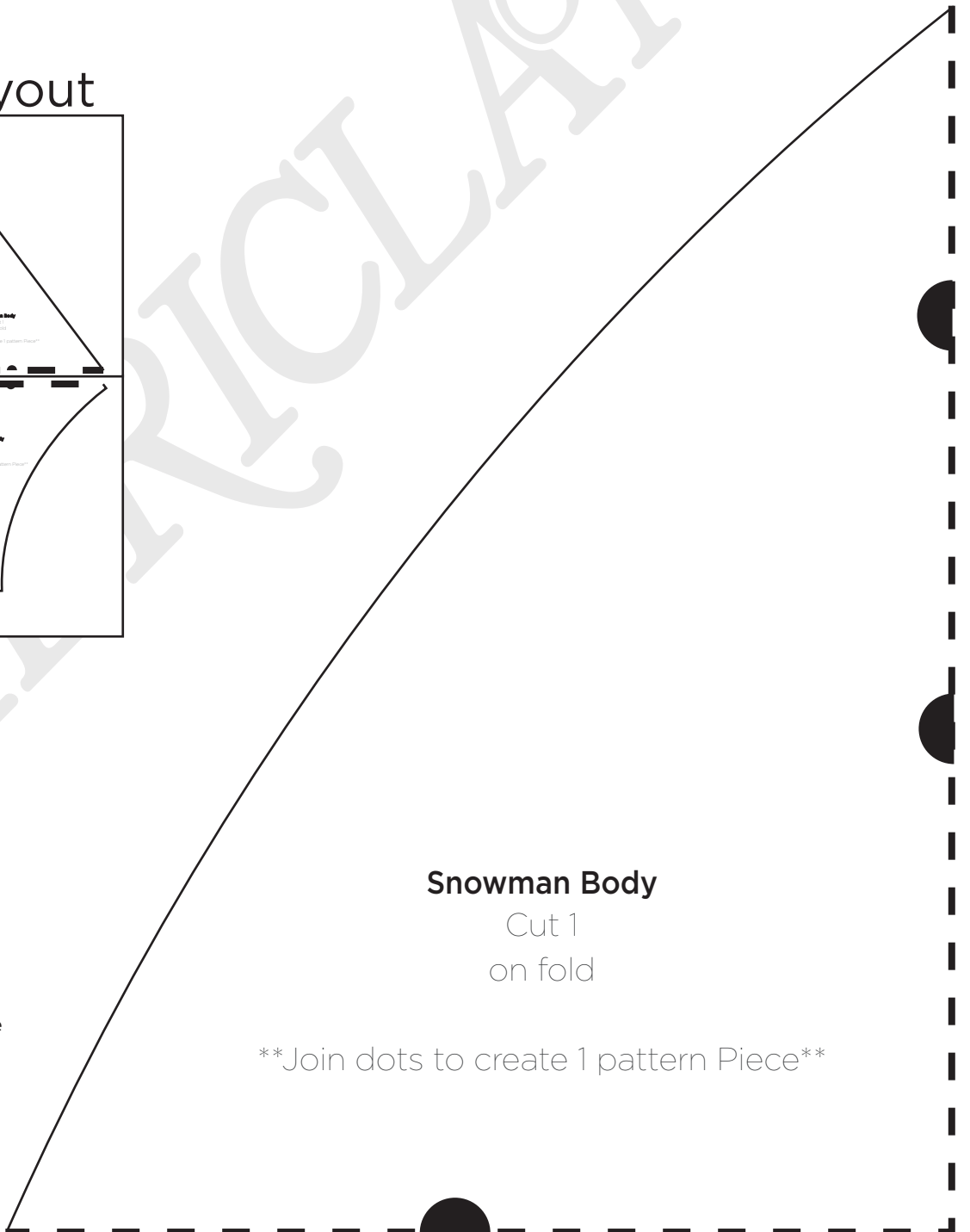
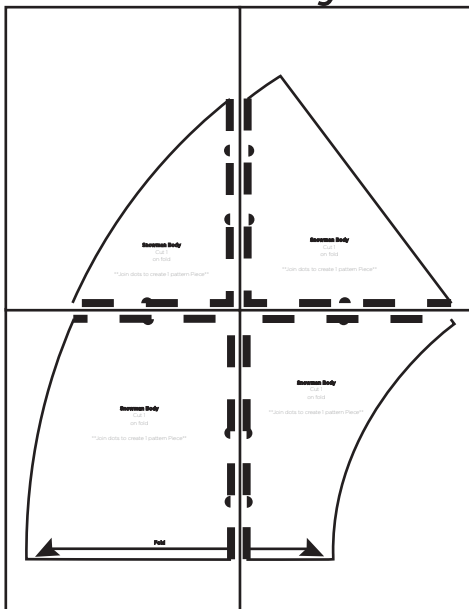
Every effort has been made to ensure that all projects are error free. As we have no control over the execution of instructions no warranty can be given, nor results guaranteed. This pattern is not available for commercial resale. You cannot copy and sell or digitally distribute this pattern. You may sell items you make with this pattern.

Patterns do include seam allowances.

1" Test Square



Pattern Layout



Snowman Body

Cut 1
on fold

Join dots to create 1 pattern Piece

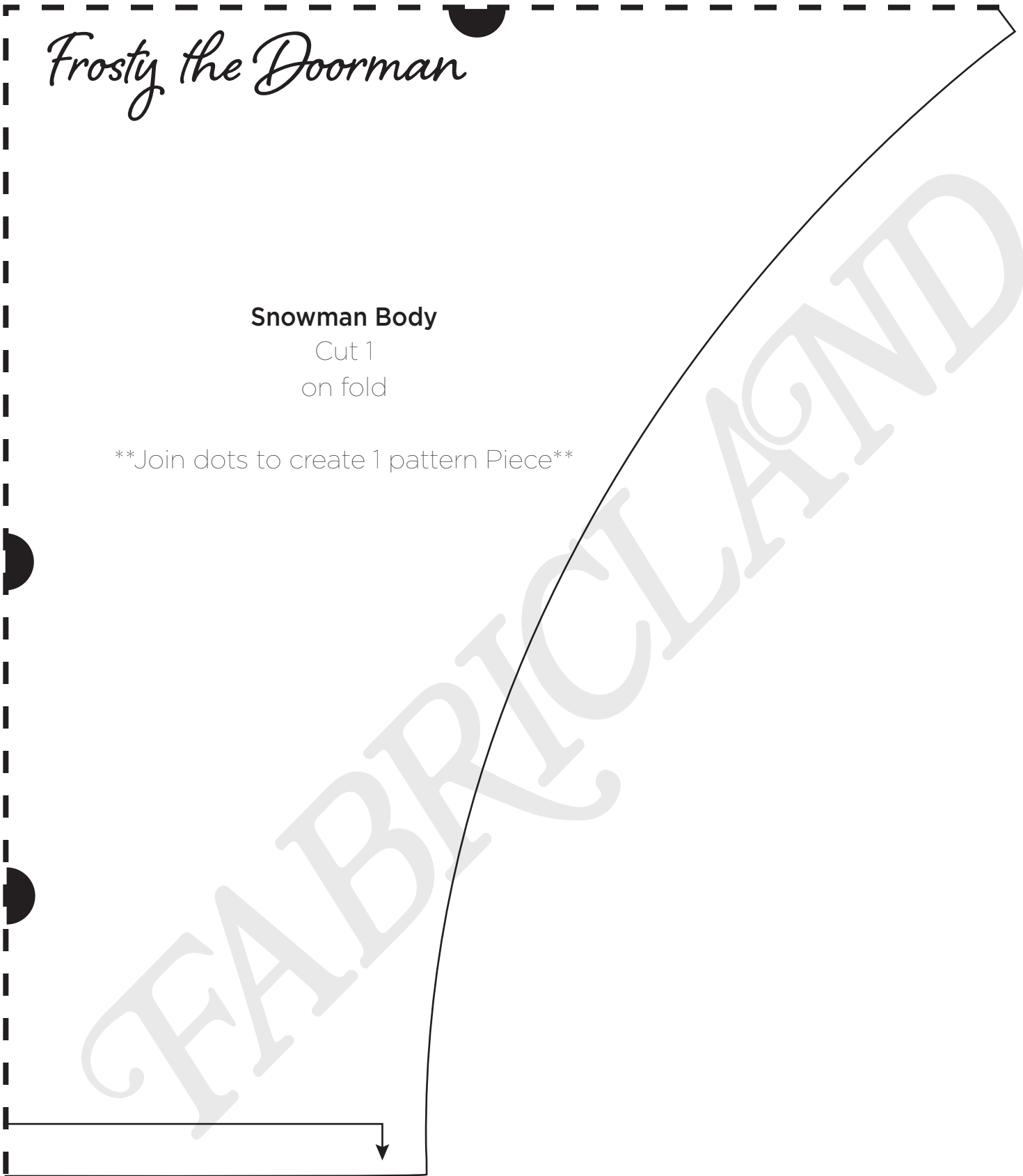
©Fabricland 2021.
Every effort has been made to ensure that all projects are error free. As we have no control over the execution of instructions no warranty can be given, nor results guaranteed. This pattern is not available for commercial resale. You cannot copy and sell or digitally distribute this pattern. You may sell items you make with this pattern.

Frosty the Doorman

Snowman Body

Cut 1
on fold

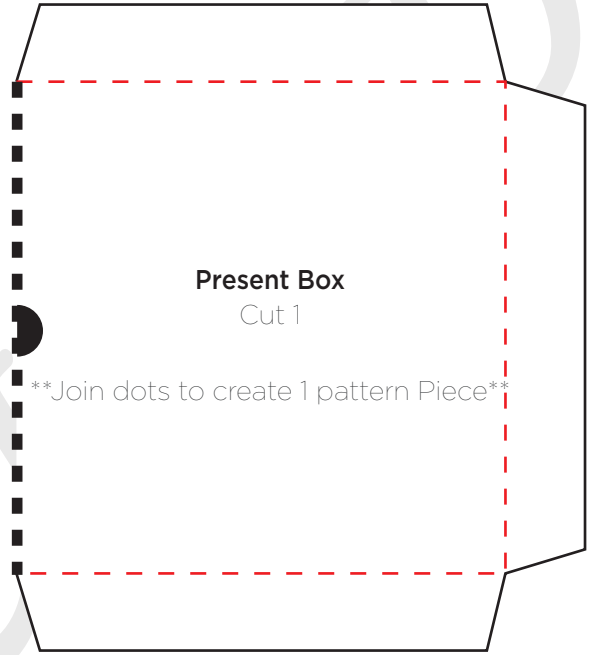
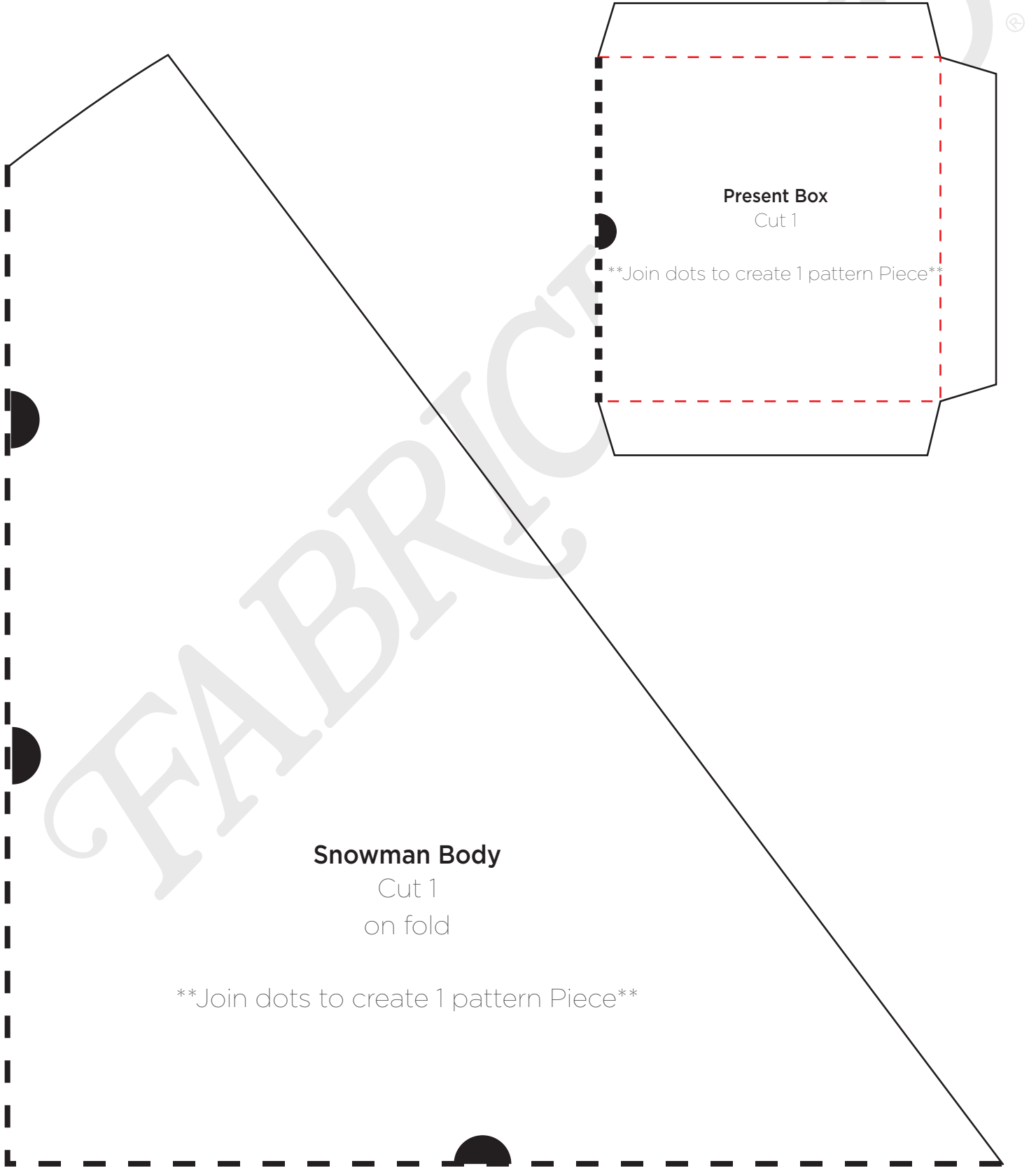
Join dots to create 1 pattern Piece



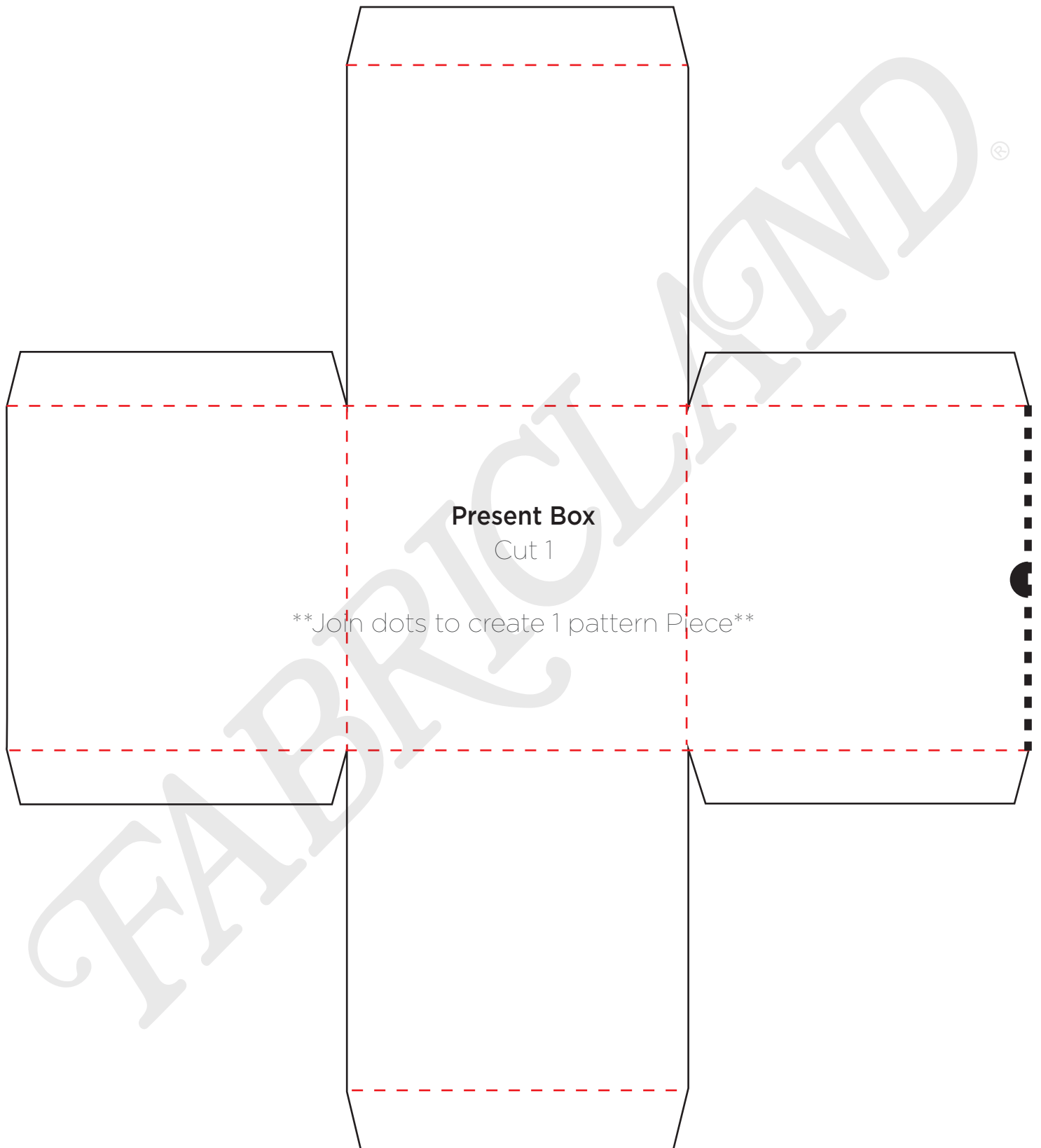
Frosty the Doorman

©Fabricland 2021.

Every effort has been made to ensure that all projects are error free. As we have no control over the execution of instructions no warranty can be given, nor results guaranteed. This pattern is not available for commercial resale. You cannot copy and sell or digitally distribute this pattern. You may sell items you make with this pattern.



Frosty the Doorman



©Fabricland 2021.

Every effort has been made to ensure that all projects are error free. As we have no control over the execution of instructions no warranty can be given, nor results guaranteed. This pattern is not available for commercial resale. You cannot copy and sell or digitally distribute this pattern. You may sell items you make with this pattern.