

# FABRICLAND

Difficulty: 

Valentines Gnome



DIY Project

# Valentines Gnome

## Material Requirements

Right Side:  Wrong Side: 

Gnomie Love Tossed Words - Pink	0.2m
Scrap Fabric White or Beige	Scrap
Faux Fur White	0.2m
Medium Weight Felt Red	1 sheet
Medium Weight Felt Pink	0.2m
Poly-Pellets 2lbs	1 bag
Fibre Fill 1lbs	1 bag

**Please read instructions carefully before cutting**

## Cutting Instructions

### From Tossed Words - Pink:

- (2) Body on fold
- (2) Legs
- (1) Bottom
- (2) 4" x 4" squares

### From Scrap Fabric:

- (1) Nose

### From Faux Fur:

- (1) Gnome Beard

### From Medium Weight Felt - Red:

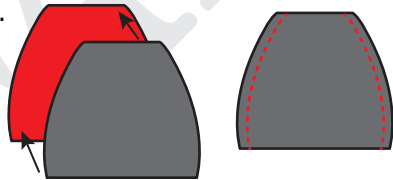
- (1) Heart

### From Medium Weight Felt - Pink:

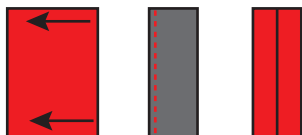
- (4) Boots
- (1) Hat on fold

## Gnome Assembly - Seam Allowance: 1/4"

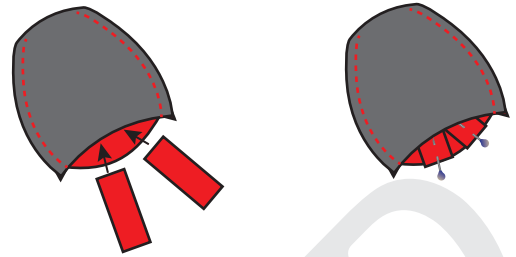
1 Place (2) Body right sides together and sew down either side.



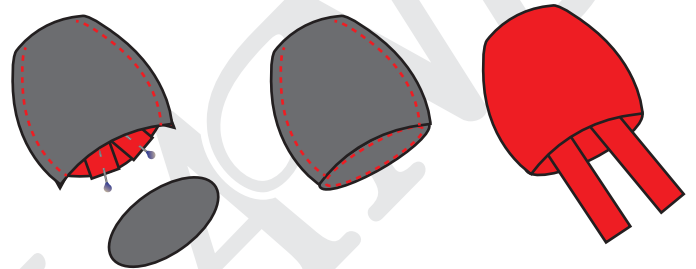
2 Fold (1) Leg right sides together and sew down the long edge. Turn right way out. Repeat for 2nd Leg.



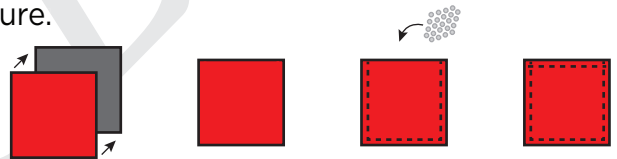
3 Place (2) legs inside the the body. Lining the ends up with the bottom of the body and pin in place.



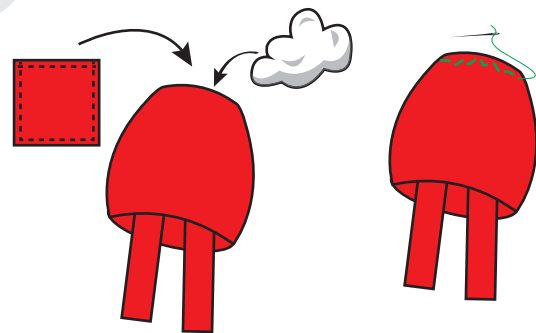
4 Pin Bottom to Body, right sides together, stitch to secure. Turn Body right way out.



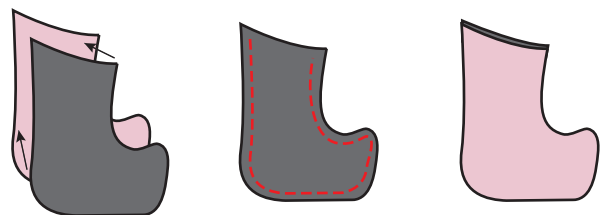
5 Take (2) 4" x 4" squares and sew around 3 sides. Fill bag with poly-pellets and sew across the top to secure.



6 Insert the poly-pellet bag into the Body and stuff with Fibre Fill. Using a hand needle and thread, gather the top of the body. Stitch closed.



7 Place (2) boots right side together and stitch around, leaving the top open. Turn right way out. Repeat for remaining (2) boots.



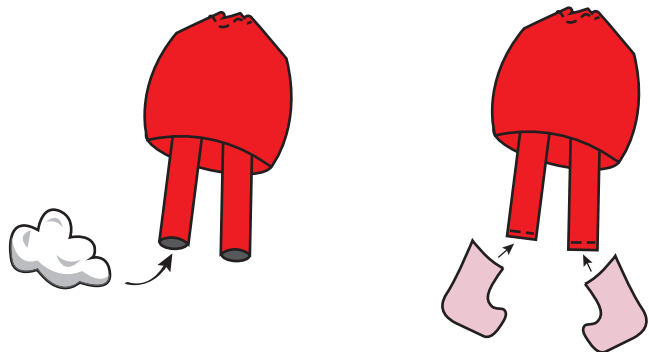
©Fabricland 2022.

Every effort has been made to ensure that all projects are error free. As we have no control over the execution of instructions no warranty can be given, nor results guaranteed. This pattern is not available for commercial resale. You cannot copy and sell or digitally distribute this pattern. You may sell items you make with this pattern.

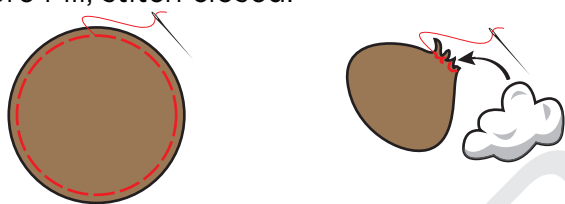
# Valentines Gnome

8 Stuff both legs with Fibre Fill. Stitch opening shut.

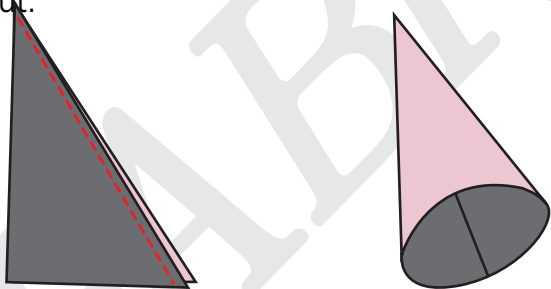
Slip boot over leg and glue in place, if needed boot can be lightly stuffed with Fibre Fill.



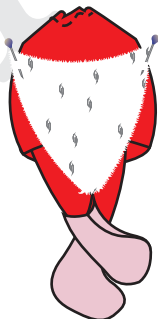
9 Using a hand needle and thread, gather the outside edge of the nose. Pull in and stuff with Fibre Fill, stitch closed.



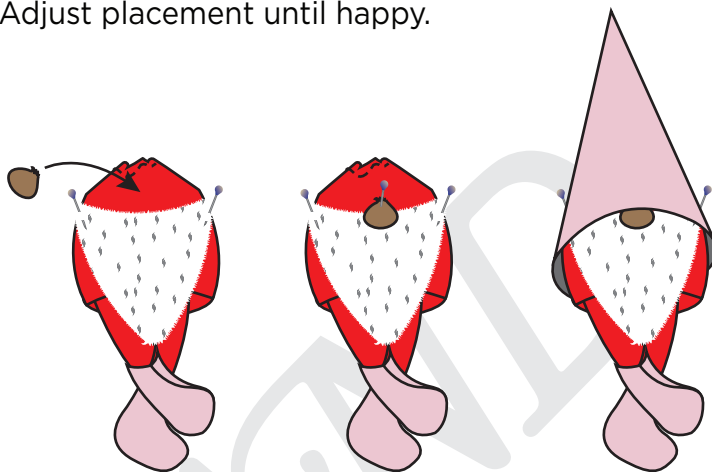
10 Fold Hat right sides together and stitch down long side to secure. Trim point and turn right way out.



11 Line Gnome beard up with Body, pin in place.



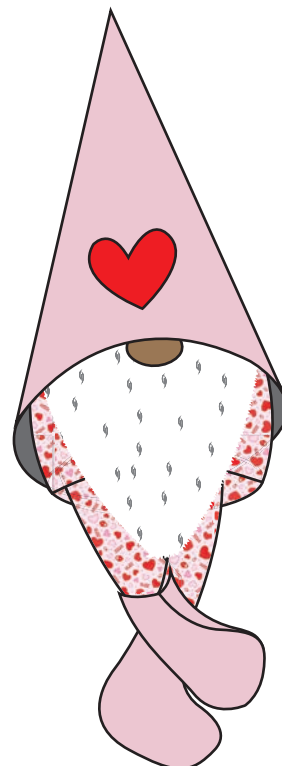
12 Pin Nose in the center of the top of the beard, place hat on top. Adjust placement until happy.



13 Once placement has been finalised, glue pieces in place.



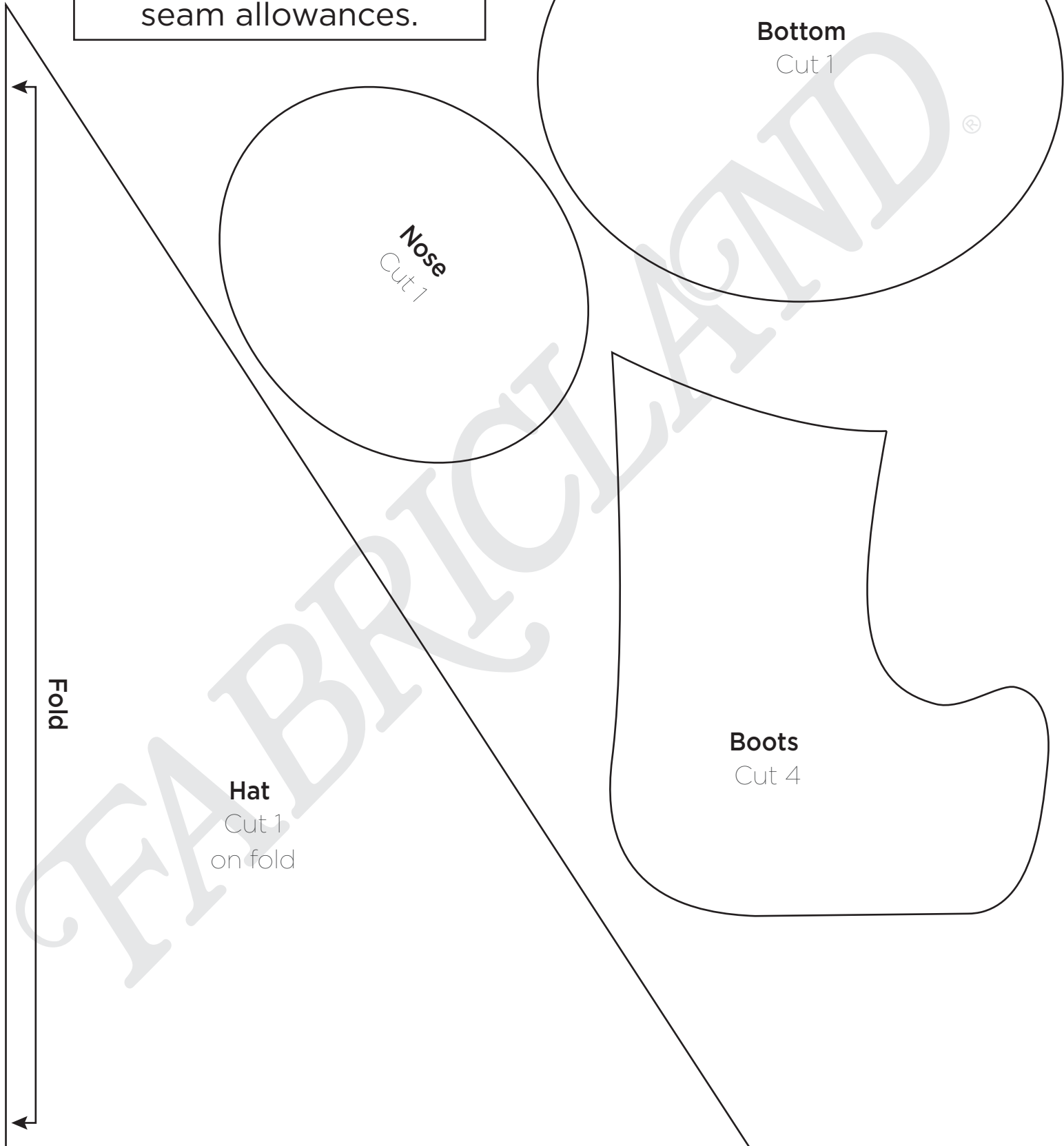
14 Glue Heart to the hat.





# Valentines Gnome

Patterns do include  
seam allowances.



©Fabricland 2022.

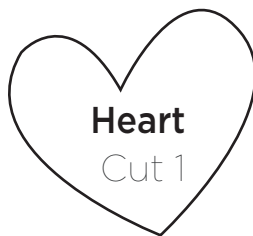
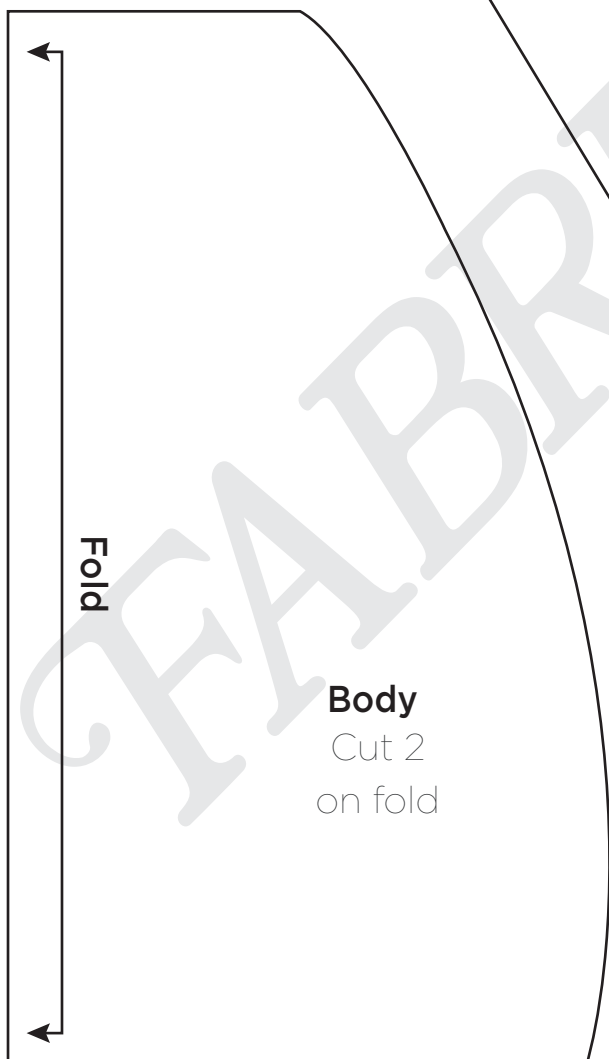
Every effort has been made to ensure that all projects are error free. As we have no control over the execution of instructions no warranty can be given, nor results guaranteed. This pattern is not available for commercial resale. You cannot copy and sell or digitally distribute this pattern. You may sell items you make with this pattern.



# Valentines Gnome

**Gnome Beard**

Cut 1



**Legs**

Cut 2

